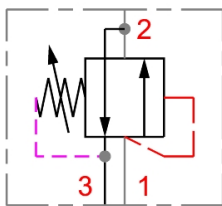


EATON Pressure sequence valve PSV1 10

Characteristics

Version: Screw in cartridge valves



Cavity mm	Max. operating pressure bar	Max. oilflow l/min	Adjustment range	Material	Article
C-10-3	210	23	7 - 40 bar	Steel	1049663
C-10-3	210	23	3,5 - 14 bar	Steel	1049668
C-10-3	210	23	7 - 40 bar	Steel	1049670
C-10-3	210	23	30 - 165 bar	Steel	1049669

Disclaimer: The content of this document has been composed with the utmost care. However, it is possible that certain information changes over time, becomes inaccurate or incomplete. ERIKS does not guarantee that the information provided on this document is up to date, accurate and complete; the information provided is not intended to be advice. ERIKS shall never be liable for damage resulting from the use of the information provided.