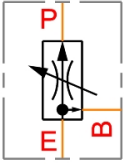


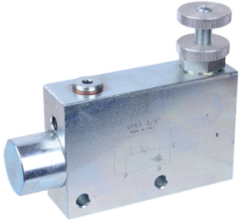
## OLEODINAMICA MARCHESINI 3-way pressure compensated flow control valve VPR 3



### Characteristics

**Version:** Inline mounting

**Type of valve:** Exceeding flow to pressure



Max. operating pressure bar	Max. oilflow l/min	Material	Connections	Article
350	40	Steel	3/8" BSP	12495714
350	60	Steel	1/2" BSP	12495715
350	90	Steel	3/4" BSP	12495716
350	150	Steel	1" BSP	12495717

Disclaimer: The content of this document has been composed with the utmost care. However, it is possible that certain information changes over time, becomes inaccurate or incomplete. ERIKS does not guarantee that the information provided on this document is up to date, accurate and complete; the information provided is not intended to be advice. ERIKS shall never be liable for damage resulting from the use of the information provided.