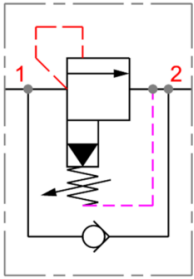


DANFOSS Pressure relief valve 1-2 series RV2

Characteristics

Version: Screw in cartridge valves

Type of valve: Indirect with checkvalve



Cavity mm	Max. operating pressure bar	Max. oilflow l/min	Adjustment range	Article
C-10-2	350	114	7 - 140 bar	1034288
C-10-2	350	114	17 - 240 bar	1034289
C-10-2	350	114	35 - 350 bar	1034290
C-10-2	350	114	3,5 - 20 bar	1034291
C-10-2	350	114	7 - 140 bar	1034292
C-10-2	350	114	17 - 240 bar	1034293
C-10-2	350	114	35 - 350 bar	1034294

Disclaimer: The content of this document has been composed with the utmost care. However, it is possible that certain information changes over time, becomes inaccurate or incomplete. ERIKS does not guarantee that the information provided on this document is up to date, accurate and complete; the information provided is not intended to be advice. ERIKS shall never be liable for damage resulting from the use of the information provided.