



Ball valve Series: HFKH Type: 1956 Stainless steel Internal thread (NPT) PN650

Characteristics

Series: HFKH
Type: 1956
Norm: ASME
Construction type: 2-way
Housing construction: 3-part
Housing material: Stainless steel
Material quality: 1.4571
Connection: Internal thread (NPT)
Secondary spindle seal material: FPM (FKM)

Body seal: FPM (FKM)

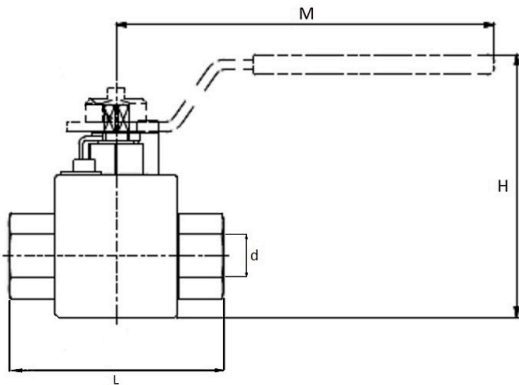
Actuator material: Steel

Minimum medium temperature (continuous): -40 °C

Maximum medium temperature (continuous): 85 °C

Application

- Recommended in: Hydrogen



Size table:

DN	Full bore	d	L	H	M	Weight
		mm	mm	mm	mm	kg
1/4" [8]	Yes	8	105	78	152	1.3
1/2" [13]	Yes	13	125	81	152	2.4
1" [25]	Yes	25	160	112	202	7.9

Nominal inner diameter	Standard thread connection	Pressure rating	Face to Face norm	Manual operation	Bore	Material ball	Seat material	Spindle material	Primary spindle seal material	Article
1/4" [8]	ASME B1.20.1	PN650	Manufacturer standard	Handle	Full bore	1.4571 / Nitronic-50®	PEEK	Nitronic-50®	PTFE	14543796
1/2" [13]	ASME B1.20.1	PN650	Manufacturer standard	Handle	Full bore	1.4571 / Nitronic-50®	PEEK	Nitronic-50®	PTFE	14543798
1" [25]	ASME B1.20.1	PN650	Manufacturer standard	Handle	Full bore	1.4571 / Nitronic-50®	PEEK	Nitronic-50®	PTFE	14543800

Disclaimer: The content of this document has been composed with the utmost care. However, it is possible that certain information changes over time, becomes inaccurate or incomplete. ERIKS does not guarantee that the information provided on this document is up to date, accurate and complete; the information provided is not intended to be advice. ERIKS shall never be liable for damage resulting from the use of the information provided.