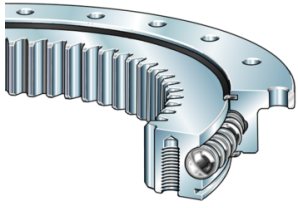


INA Four point contact bearing internal gear teeth series VLI20



Characteristics

Series: VLI20

Rolling element: Balls

With sealing: Yes

Toothing: Internal toothing

Operating temperature: -25 / 80 °C

Manufacturer ID	Inner diameter mm	Outer diameter mm	Width mm	Article
VLI200414-N	325	518	56	14191786
VLI200414-N-VSP	325	518	56	14191787
VLI200544-N	444	648	56	14191790
VLI200644-N	546	748	56	14191792
VLI200844-N	736	948	56	14191796
VLI201094-N	984	1198	56	14191802

Disclaimer: The content of this document has been composed with the utmost care. However, it is possible that certain information changes over time, becomes inaccurate or incomplete. ERIKS does not guarantee that the information provided on this document is up to date, accurate and complete; the information provided is not intended to be advice. ERIKS shall never be liable for damage resulting from the use of the information provided.