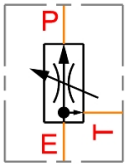


OLEODINAMICA MARCHESINI 3-way pressure-compensated flow control valve RFP 3



Characteristics

Version: Inline mounting

Type of valve: Exceeding flow to tank



Max. operating pressure bar	Max. oilflow l/min	Material	Connections	Article
350	30	Steel	3/8" BSP	12495712
350	50	Steel	1/2" BSP	12495713

Disclaimer: The content of this document has been composed with the utmost care. However, it is possible that certain information changes over time, becomes inaccurate or incomplete. ERIKS does not guarantee that the information provided on this document is up to date, accurate and complete; the information provided is not intended to be advice. ERIKS shall never be liable for damage resulting from the use of the information provided.