

ECON® Bourdon tube pressure gauge Type 1401A rear connection brass



Characteristics

- Type:** 1401A
- Model:** Bourdon tube pressure gauge
- Blow-out included:** No
- Pressure gauge attachment:** Direct
- Process connection:** External thread
- Process connection material:** Brass
- Window material:** Acrylic
- Protection class:** IP54
- Medium temperature:** 0 / 50 °C
- Ambient temperature:** 0 / 50 °C

Application

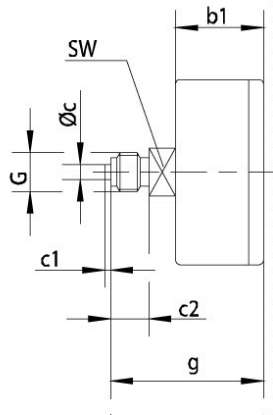
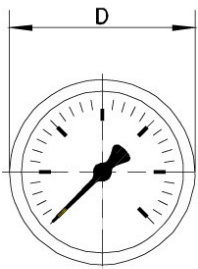
- Light industry.
- Pneumatics.
- Installation technique.

Technical Information

- Suitable for gases and liquids that do not affect the brass measuring system.
- Measuring ranges according to EN 837-1.

Options

- Double scale for example in bar/psi.
- Damping screw in connection.
- Dial according to customer specification for example company logo.



Size table:

Cabinet diameter	G	b1	c	c1	RA	D	g	SW
		mm	mm	mm	mm	mm	mm	mm
R40	1/8"	27			10	40	46	14
R50	1/4"	30	5	2	13	50	50	14
R63	1/4"	30	5	2	13	62	52	14

Cabinet diameter mm	Measuring range	Pressure unit	Accuracy class	Cabinet filling fluid	Connection location	Size process connection	Cabinet material	Material dial	Maximum overpressure bar	Article
40	-1 / 0	bar	1.6 %	None	Back centric	1/8" BSPP[G]	Stainless steel 304	Aluminium	0	685091
50	0 / 1	bar	1.6 %	None	Back centric	1/4" BSPP[G]	Stainless steel 304	Aluminium	1.3	685099
50	0 / 2.5	bar	1.6 %	None	Back centric	1/4" BSPP[G]	Stainless steel 304	Aluminium	3	685100
63	-1 / 1.5	bar	1.6 %	None	Back centric	1/4" BSPP[G]	Stainless steel 304	Aluminium	1.9	685159
63	0 / 0.6	bar	1.6 %	None	Back centric	1/4" BSPP[G]	Stainless steel 304	Aluminium	0.8	691528
63	0 / 4	bar	1.6 %	None	Back centric	1/4" BSPP[G]	Stainless steel 304	Aluminium	5	685144
63	0 / 10	bar	1.6 %	None	Back centric	1/4" BSPP[G]	Stainless steel 304	Aluminium	13	10059716
63	0 / 25	bar	1.6 %	None	Back centric	1/4" BSPP[G]	Stainless steel 304	Aluminium	32	685136
63	0 / 60	bar	1.6 %	None	Back centric	1/4" BSPP[G]	Stainless steel 304	Aluminium	78	685148

Disclaimer: The content of this document has been composed with the utmost care. However, it is possible that certain information changes over time, becomes inaccurate or incomplete. ERIKS does not guarantee that the information provided on this document is up to date, accurate and complete; the information provided is not intended to be advice. ERIKS shall never be liable for damage resulting from the use of the information provided.

Cabinet diameter mm	Measuring range	Pressure unit	Accuracy class	Cabinet filling fluid	Connection location	Size process connection	Cabinet material	Material dial	Maximum overpressure bar	Article
63	0 / 250	bar	1.6 %	None	Back centric	1/4" BSPP[G]	Stainless steel 304	Aluminium	325	685132

Disclaimer: The content of this document has been composed with the utmost care. However, it is possible that certain information changes over time, becomes inaccurate or incomplete. ERIKS does not guarantee that the information provided on this document is up to date, accurate and complete; the information provided is not intended to be advice. ERIKS shall never be liable for damage resulting from the use of the information provided.