

ECON® Pressure gauge valve Type 862 steel internal/external thread



Characteristics

- Type:** 862
- Housing material:** Steel
- Material quality:** 1.0460
- Operation:** Hand wheel
- Material tension socket:** Steel
- Material swivel nut:** Steel

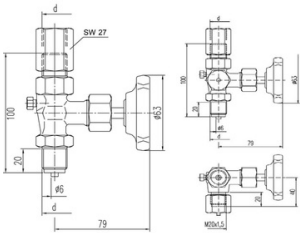
Technical Information

- According to DIN 16270 form A.
- With venting screw.
- Tension socket connection according to DIN 16283.
- Type 862M provided with inspection connection M20 x 1.5.



Application

- Liquids, gases and vapours.
- Process industry.
- Machine building.
- Oil- and gas industry.
- Power plants.



Process connection	Size process connection	Connection instrument side	Size instrument connection	Inspection connection	Pressure rating	Maximum pressure at 20 °C bar	Maximum medium temperature (continuous) °C	Primary spindle seal material	Spindle material	Article
External thread	1/2" BSPP(G)	Tension socket	1/2" BSPP(G)	-	PN400	400	120	PTFE	1.4104	EC0086201/2-EBBH
External thread	1/2" BSPP(G)	Tension socket	1/2" BSPP(G)	M20x1.5	PN400	400	120	PTFE	1.4104	EC0862M01/2-MABBABO

Disclaimer: The content of this document has been composed with the utmost care. However, it is possible that certain information changes over time, becomes inaccurate or incomplete. ERIKS does not guarantee that the information provided on this document is up to date, accurate and complete; the information provided is not intended to be advice. ERIKS shall never be liable for damage resulting from the use of the information provided.