



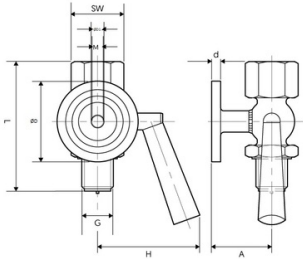
ECON® Pressure gauge valve Type 345 brass inspection flange internal/external thread

Characteristics

Type: 345

Housing material: Brass

Operation: Handle



Process connection	Size process connection	Connection instrument side	Size instrument connection	Inspection connection	Pressure rating	Maximum pressure at 20 °C bar	Maximum medium temperature (continuous) °C	Primary spindle seal material	Spindle material	Article
External thread	1/2" BSPP(G)	Internal thread	1/2" BSPP(G)	Flange 40 x 5 mm	PN25	25	50	PTFE	Brass	SY0034501/2-CACC
External thread	1/4" BSPP(G)	Internal thread	1/4" BSPP(G)	Flange 40 x 5 mm	PN25	25	50	PTFE	Brass	582338

Disclaimer: The content of this document has been composed with the utmost care. However, it is possible that certain information changes over time, becomes inaccurate or incomplete. ERIKS does not guarantee that the information provided on this document is up to date, accurate and complete; the information provided is not intended to be advice. ERIKS shall never be liable for damage resulting from the use of the information provided.