



## ECON® Tension socket Type 1397 brass

### Characteristics

**Type:** 1397

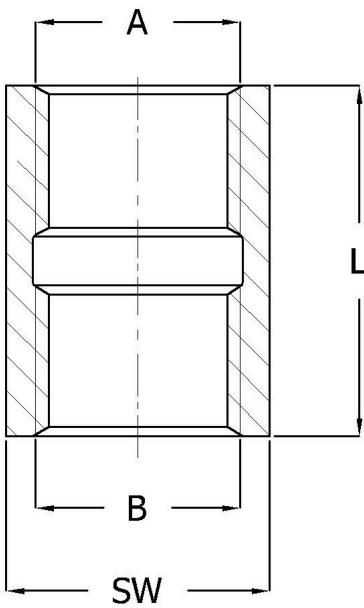
**Model:** Tension socket

**Norm:** DIN 16283

**Max. operating pressure:** 250 bar

### Technical Information

- Marking for left-hand thread through a notch.



### Size table:

Article	A	B	L	SW
			mm	mm
11812311	1/2" (G)BSPP RH	1/2" (G)BSPP LH	36	27

Material	Process connection	Size process connection	Connection instrument side	Size instrument connection	Article
Brass	Internal thread right hand	1/2" BSPP(G)	Internal thread left hand	1/2" BSPP(G)	EC0139701/2PMOC

Disclaimer: The content of this document has been composed with the utmost care. However, it is possible that certain information changes over time, becomes inaccurate or incomplete. ERIKS does not guarantee that the information provided on this document is up to date, accurate and complete; the information provided is not intended to be advice. ERIKS shall never be liable for damage resulting from the use of the information provided.