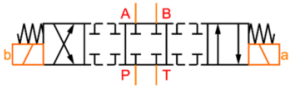


## DANFOSS CETOP plunger 2C



### Characteristics

**Version:** Flangeable

**Size:** NG6/Cetop 3

**Type of valve:** 4/3

**Operation:** Electrical



Model	Max. operating pressure bar	Max. oilflow l/min	Voltage	Max. pressure on T bar	Electrical connection	Number of magnets per valve	Article
Conventional	350	80	12 VDC	210	DIN-Connector	2	1033791
Conventional	350	80	24 VDC	210	DIN-Connector	2	1033792
Conventional	350	80	110 VAC 50HZ	210	DIN-Connector	2	1033794
Conventional	350	80	196 VDC	210	DIN-Connector	2	1039959
Conventional	350	80	230 VAC 50HZ	210	DIN-Connector	2	1039948
Conventional	350	80	230 VAC 50HZ	210	DIN-Connector	2	1039951
Conventional	315	120	12 VDC	160	DIN-Connector	2	1033890
Conventional	315	120	24 VDC	160	DIN-Connector	2	1033884
Conventional	315	120	110 VAC 50HZ	120	DIN-Connector	2	1033915
Conventional	315	120	230 VAC 50HZ	120	DIN-Connector	2	1033895

Disclaimer: The content of this document has been composed with the utmost care. However, it is possible that certain information changes over time, becomes inaccurate or incomplete. ERIKS does not guarantee that the information provided on this document is up to date, accurate and complete; the information provided is not intended to be advice. ERIKS shall never be liable for damage resulting from the use of the information provided.