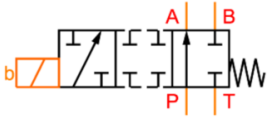


DANFOSS CETOP plunger 22A



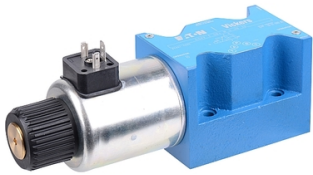
Characteristics

Version: Flangeable

Size: NG10/Cetop 5

Type of valve: 4/2

Operation: Electrical



Model	Max. operating pressure bar	Max. oilflow l/min	Voltage	Max. pressure on T bar	Electrical connection	Number of magnets per valve	Article
Conventional	315	120	24 VDC	160	DIN-Connector	1	1041527
Conventional	315	120	110 VAC 50HZ	120	DIN-Connector	1	1041518

Disclaimer: The content of this document has been composed with the utmost care. However, it is possible that certain information changes over time, becomes inaccurate or incomplete. ERIKS does not guarantee that the information provided on this document is up to date, accurate and complete; the information provided is not intended to be advice. ERIKS shall never be liable for damage resulting from the use of the information provided.