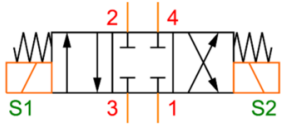


## DANFOSS Screw-in Cartridge Valves SV9 8 + SV9 10 - E



### Characteristics

Type of valve: 4/3

Operation: Electrical



Cavity mm	Model	Max. operating pressure bar	Max. oilflow l/min	Magnet type	Number of magnets per valve	Article
C-8-4	Conventional	210	13	P [2x] + OP [1x]	2	11955762
C-10-4	Conventional	210	23	J [2X] + OJ [1X]	2	11955763

Disclaimer: The content of this document has been composed with the utmost care. However, it is possible that certain information changes over time, becomes inaccurate or incomplete. ERIKS does not guarantee that the information provided on this document is up to date, accurate and complete; the information provided is not intended to be advice. ERIKS shall never be liable for damage resulting from the use of the information provided.