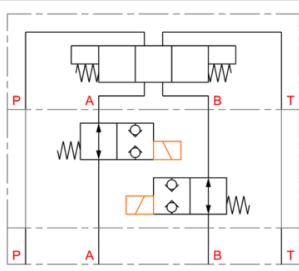


DANFOSS CETOP 2/2 valve A and B normally open



Characteristics

Version: Sandwich

Size: NG6/Cetop 3

Type of valve: 2/2 (in A and B)

Operation: Electrical

Material: Steel



| Model | Max. operating pressure bar | Max. oilflow l/min | Voltage | Electrical connection | Cartridge model | Manifold type | Height | Article |
|--------------|--------------------------------|-----------------------|---------|-----------------------|-------------------------|---------------|--------|----------|
| Conventional | 250 | 60 | 24 VDC | DIN-Connector | SBV11 10 0 0 00 [2x] | A324W | 43,2 | 12218185 |
| Conventional | 350 | 60 | 12 VDC | DIN-Connector | SBV11 10 0 0 00 [2x] | A324W | 43,2 | 12218184 |

Disclaimer: The content of this document has been composed with the utmost care. However, it is possible that certain information changes over time, becomes inaccurate or incomplete. ERIKS does not guarantee that the information provided on this document is up to date, accurate and complete; the information provided is not intended to be advice. ERIKS shall never be liable for damage resulting from the use of the information provided.