

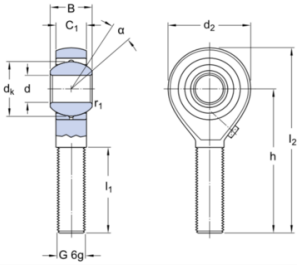


SKF Rod end Requiring maintenance Steel/Bronze External thread left hand Series: SALKAC..M

Design:

Rod end with a threaded shank, requiring maintenance.
External (male) left-hand thread.

Sizes 6 and larger can be lubricated via the relubrication facility in the rod end shank or housing.



Sliding contact surface combination: Steel/bronze

Lower load carrying capacity compared to steel/steel rod ends, but more suitable for applications where lubricant starvation might occur.

Steel/bronze rod ends consist of a rod end housing and a steel/bronze spherical plain bearing. These bearings have an inner ring made of steel and an outer ring made of bronze. The bearing is held in position by staking the housing on both sides of the outer ring.

Characteristics

Series: SALKAC..M

Thread type: External thread left hand

Maintenance: Requiring maintenance

Sliding contact surface: Steel/Bronze

Manufacturer ID	Inner diameter mm	Thread size	Article
SALKAC 5 M	5	M 5	23769572
SALKAC 6 M	6	M 6	23769573
SALKAC 8 M	8	M 8	23769574
SALKAC 10 M	10	M 10	23769564
SALKAC 12 M	12	M 12	23769565
SALKAC 14 M	14	M 14	23769566
SALKAC 16 M	16	M 16	23769567
SALKAC 20 M	20	M 20x1.5	23769568
SALKAC 22 M	22	M 22x1.5	23769569
SALKAC 25 M	25	M 24x2	23769570
SALKAC 30 M	30	M 30x2	23769571

Disclaimer: The content of this document has been composed with the utmost care. However, it is possible that certain information changes over time, becomes inaccurate or incomplete. ERIKS does not guarantee that the information provided on this document is up to date, accurate and complete; the information provided is not intended to be advice. ERIKS shall never be liable for damage resulting from the use of the information provided.