

## IGUS Flanged bushing Maintenance-free iglidur® A200/ igidur® A200 Series: AFM



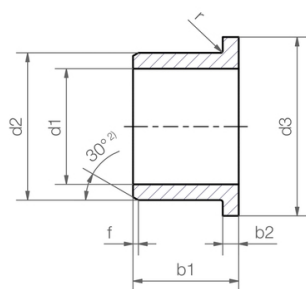
### Characteristics

**Series:** AFM

**With collar:** Yes

**Maintenance:** Maintenance-free

**Tread material:** iglidur® A200



| Manufacturer ID | Shaft diameter<br>mm | Outer diameter<br>mm | Width<br>mm | Flange diameter<br>mm | Flange thickness<br>mm | Article  |
|-----------------|----------------------|----------------------|-------------|-----------------------|------------------------|----------|
| AFM-0103-02     | 1                    | 3                    | 2           |                       |                        | 13564019 |
| AFM-0104-02     | 1                    | 4                    | 2           |                       |                        | 13564020 |
| AFM-0205-03     | 2                    | 5                    | 3           |                       |                        | 13564021 |
| AFM-0206-03     | 2                    | 6                    | 3           |                       |                        | 13564022 |
| AFM-0306-04     | 3                    | 6                    | 4           |                       |                        | 13564023 |
| AFM-0408-04     | 4                    | 8                    | 4           |                       |                        | 13564024 |
| AFM-0408-06     | 4                    | 8                    | 6           |                       |                        | 13564025 |
| AFM-0507-05     | 5                    | 7                    | 5           |                       |                        | 13564026 |
| AFM-0509-05     | 5                    | 9                    | 5           |                       |                        | 13564027 |
| AFM-0509-06     | 5                    | 9                    | 6           |                       |                        | 13564028 |
| AFM-0509-08     | 5                    | 9                    | 8           |                       |                        | 13564029 |
| AFM-0610-04     | 6                    | 10                   | 4           |                       |                        | 13564030 |
| AFM-0610-06     | 6                    | 10                   | 6           |                       |                        | 13564031 |
| AFM-0610-10     | 6                    | 10                   | 10          |                       |                        | 13564032 |
| AFM-0612-06     | 6                    | 12                   | 6           |                       |                        | 13564033 |
| AFM-0612-10     | 6                    | 12                   | 10          |                       |                        | 13564034 |
| AFM-0711-08     | 7                    | 11                   | 8           |                       |                        | 13564035 |
| AFM-0811-08     | 8                    | 11                   | 8           |                       |                        | 13564036 |
| AFM-0812-06     | 8                    | 12                   | 6           |                       |                        | 13564037 |
| AFM-0812-08     | 8                    | 12                   | 8           |                       |                        | 13564038 |
| AFM-0812-12     | 8                    | 12                   | 12          |                       |                        | 13564039 |
| AFM-0812-22     | 8                    | 12                   | 22          |                       |                        | 13564040 |
| AFM-0814-06     | 8                    | 14                   | 6           |                       |                        | 13564041 |
| AFM-0814-10     | 8                    | 14                   | 10          |                       |                        | 12762888 |
| AFM-0914-06     | 9                    | 14                   | 6           |                       |                        | 13564042 |
| AFM-0914-10     | 9                    | 14                   | 10          |                       |                        | 13564043 |
| AFM-0914-14     | 9                    | 14                   | 14          |                       |                        | 13564044 |
| AFM-1016-06     | 10                   | 16                   | 6           |                       |                        | 13564045 |
| AFM-1016-08     | 10                   | 16                   | 8           |                       |                        | 13564046 |
| AFM-1016-10     | 10                   | 16                   | 10          |                       |                        | 13564047 |
| AFM-101620-10   | 10                   | 16                   | 10          | 20                    | 3                      | 13506818 |
| AFM-1016-16     | 10                   | 16                   | 16          |                       |                        | 13564048 |
| AFM-1214-12     | 12                   | 14                   | 12          |                       |                        | 13564049 |

Disclaimer: The content of this document has been composed with the utmost care. However, it is possible that certain information changes over time, becomes inaccurate or incomplete. ERIKS does not guarantee that the information provided on this document is up to date, accurate and complete; the information provided is not intended to be advice. ERIKS shall never be liable for damage resulting from the use of the information provided.

| Manufacturer ID | Shaft diameter | Outer diameter | Width | Flange diameter | Flange thickness | Article  |
|-----------------|----------------|----------------|-------|-----------------|------------------|----------|
|                 | mm             | mm             | mm    | mm              | mm               |          |
| AFM-1218-08     | 12             | 18             | 8     | 24              | 1                | 13564050 |
| AFM-1218-10     | 12             | 18             | 10    |                 |                  | 13564051 |
| AFM-1218-12     | 12             | 18             | 12    |                 |                  | 13564052 |
| AFM-1218-15     | 12             | 18             | 15    |                 |                  | 13564053 |
| AFM-1218-20     | 12             | 18             | 20    |                 |                  | 13564054 |
| AFM-1420-10     | 14             | 20             | 10    |                 |                  | 13564055 |
| AFM-1420-15     | 14             | 20             | 15    |                 |                  | 13564056 |
| AFM-1420-20     | 14             | 20             | 20    | 25              | 3                | 13564057 |
| AFM-1521-10     | 15             | 21             | 10    |                 |                  | 13506814 |
| AFM-1521-15     | 15             | 21             | 15    |                 |                  | 13564058 |
| AFM-1521-20     | 15             | 21             | 20    |                 |                  | 13507098 |
| AFM-1521-25     | 15             | 21             | 25    |                 |                  | 13564059 |
| AFM-1622-12     | 16             | 22             | 12    | 28              | 3                | 13564060 |
| AFM-1622-15     | 16             | 22             | 15    |                 |                  | 13564061 |
| AFM-1622-20     | 16             | 22             | 20    |                 |                  | 13564062 |
| AFM-1622-25     | 16             | 22             | 25    |                 |                  | 13564063 |
| AFM-1824-12     | 18             | 24             | 12    |                 |                  | 13564064 |
| AFM-1824-18     | 18             | 24             | 18    |                 |                  | 13564065 |
| AFM-1824-20     | 18             | 24             | 20    |                 |                  | 13564066 |
| AFM-1824-30     | 18             | 24             | 30    | 30              | 3                | 13564067 |
| AFM-2026-15     | 20             | 26             | 15    |                 |                  | 13564068 |
| AFM-2026-20     | 20             | 26             | 20    |                 |                  | 13561685 |
| AFM-2026-30     | 20             | 26             | 30    |                 |                  | 13564069 |
| AFM-2228-15     | 22             | 28             | 15    |                 |                  | 13564070 |
| AFM-2228-20     | 22             | 28             | 20    |                 |                  | 13564071 |
| AFM-2228-30     | 22             | 28             | 30    |                 |                  | 13564072 |
| AFM-2430-15     | 24             | 30             | 15    |                 |                  | 13564073 |
| AFM-2430-20     | 24             | 30             | 20    |                 |                  | 13564074 |
| AFM-2430-30     | 24             | 30             | 30    |                 |                  | 13564075 |
| AFM-2532-20     | 25             | 32             | 20    |                 |                  | 13400544 |
| AFM-2532-30     | 25             | 32             | 30    |                 |                  | 13564076 |
| AFM-2532-40     | 25             | 32             | 40    |                 |                  | 12344402 |
| AFM-2734-20     | 27             | 34             | 20    |                 |                  | 13564077 |
| AFM-2734-30     | 27             | 34             | 30    |                 |                  | 13564078 |
| AFM-2734-40     | 27             | 34             | 40    |                 |                  | 13564079 |
| AFM-2836-20     | 28             | 36             | 20    |                 |                  | 13564080 |
| AFM-2836-30     | 28             | 36             | 30    |                 |                  | 13564081 |
| AFM-2836-40     | 28             | 36             | 40    |                 |                  | 13564082 |
| AFM-3038-20     | 30             | 38             | 20    |                 |                  | 12455684 |
| AFM-3038-30     | 30             | 38             | 30    |                 |                  | 13564084 |
| AFM-3038-40     | 30             | 38             | 40    | 44              | 4                | 13564085 |
| AFM-3240-20     | 32             | 40             | 20    |                 |                  | 13564086 |
| AFM-3240-30     | 32             | 40             | 30    |                 |                  | 13564087 |
| AFM-3240-40     | 32             | 40             | 40    |                 |                  | 13564088 |

Disclaimer: The content of this document has been composed with the utmost care. However, it is possible that certain information changes over time, becomes inaccurate or incomplete. ERIKS does not guarantee that the information provided on this document is up to date, accurate and complete; the information provided is not intended to be advice. ERIKS shall never be liable for damage resulting from the use of the information provided.