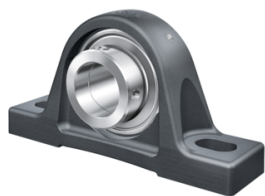


INA Pillow block unit Eccentric Locking Collar Series RASE



Characteristics

Series: RASE

Housing style: Pillow Block

Bearing type: Ball bearing

Shaft Locking Type: Eccentric Locking Collar

| Manufacturer ID | Housing material | Bearing material | Shaft diameter mm | Article |
|---------------------|------------------|------------------|----------------------|----------|
| RASE17-XL | Cast iron | Bearing steel | 17 | 11670051 |
| RASE20-XL-N | Cast iron | Bearing steel | 20 | 11670333 |
| RASE20-XL-N-FA125 | Cast iron | Bearing steel | 20 | 11670052 |
| RASE25-XL-N-FA125 | Cast iron | Bearing steel | 25 | 11670053 |
| RASE25-XL-N | Cast iron | Bearing steel | 25 | 11670334 |
| RASE25-XL-FA164 | Cast iron | Bearing steel | 25 | 14191588 |
| RASE30-XL-N | Cast iron | Bearing steel | 30 | 14185035 |
| RASE30-XL-N-FA125 | Cast iron | Bearing steel | 30 | 14185088 |
| RASE30-XL-N-FA101 | Cast iron | Bearing steel | 30 | 14191591 |
| RASE30-XL-FA164 | Cast iron | Bearing steel | 30 | 14191589 |
| RASE30-XL-N-FA125-I | Cast iron | Bearing steel | 30 | 24035793 |
| RASE30-XL-N-I | Cast iron | Bearing steel | 30 | 11670335 |
| RASE35-XL-N-FA125-I | Cast iron | Bearing steel | 35 | 11670054 |
| RASE35-XL-N-I | Cast iron | Bearing steel | 35 | 11670336 |
| RASE35-XL-FA164 | Cast iron | Bearing steel | 35 | 14191593 |
| RASE35-XL-N | Cast iron | Bearing steel | 35 | 14185077 |
| RASE40-XL-N | Cast iron | Bearing steel | 40 | 14185059 |
| RASE40-XL-N-I | Cast iron | Bearing steel | 40 | 23195506 |
| RASE40-XL-FA164 | Cast iron | Bearing steel | 40 | 14191595 |
| RASE40-XL-N-FA125 | Cast iron | Bearing steel | 40 | 24035795 |
| RASE45-XL-FA125 | Cast iron | Bearing steel | 45 | 11835453 |
| RASE45-XL | Cast iron | Bearing steel | 45 | 11670056 |
| RASE45-XL-FA164 | Cast iron | Bearing steel | 45 | 14191597 |
| RASE50-XL-N-FA125-I | Cast iron | Bearing steel | 50 | 11835455 |
| RASE55-XL | Cast iron | Bearing steel | 55 | 11670057 |
| RASE60-XL-N-I | Cast iron | Bearing steel | 60 | 11670338 |
| RASE60-XL-FA164-I | Cast iron | Bearing steel | 60 | 24204475 |
| RASE60-XL-N | Cast iron | Bearing steel | 60 | 14185055 |
| RASE65-214-XL-I | Cast iron | Bearing steel | 65 | 11670058 |
| RASE70-XL-I | Cast iron | Bearing steel | 70 | 23195770 |
| RASE75-XL | Cast iron | Bearing steel | 75 | 23196118 |
| RASE80-XL-I | Cast iron | Bearing steel | 80 | 23195771 |
| RASE90-XL-FA164 | Cast iron | Bearing steel | 90 | 14191601 |
| RASE90-XL | Cast iron | Bearing steel | 90 | 23222435 |
| RASE100-XL | Cast iron | Bearing steel | 100 | 11670049 |
| RASE120-XL | Cast iron | Bearing steel | 120 | 11670050 |

Disclaimer: The content of this document has been composed with the utmost care. However, it is possible that certain information changes over time, becomes inaccurate or incomplete. ERIKS does not guarantee that the information provided on this document is up to date, accurate and complete; the information provided is not intended to be advice. ERIKS shall never be liable for damage resulting from the use of the information provided.