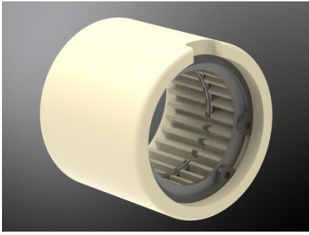


KTR Bowex Nylon sleeve type I for three-piece jaw coupling



Characteristics

Series: Bowex

Type	Size	Material	Article
Bushing	80	Nylon	24211894
Bushing	100	Nylon	23559521
Bushing	125	Nylon	12243849

Disclaimer: The content of this document has been composed with the utmost care. However, it is possible that certain information changes over time, becomes inaccurate or incomplete. ERIKS does not guarantee that the information provided on this document is up to date, accurate and complete; the information provided is not intended to be advice. ERIKS shall never be liable for damage resulting from the use of the information provided.