



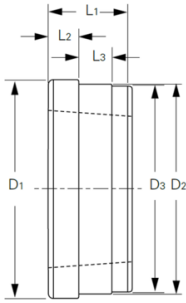
FENNER Weld-on hub WH series

Fenner Taper Lock® Weld-on Hubs are made of steel. Drilled, tapped and taper bored to receive standard Taper Lock® bushes. The shouldered outer diameter provides a convenient means of welding hubs into fan rotors, steel pulleys, plate sprockets, impellers, agitators and many other devices which must be firmly fastened to the shaft.

Characteristics

Series: WH

Type: 35



Tradename	Size	Material	Outer diameter mm	Article
Taper Lock®	1210	Steel C45 [1.0503]	70	WH12HUBS-FEN
Taper Lock®	1610	Steel C45 [1.0503]	80	WH16HUBS-FEN
Taper Lock®	2012	Steel C45 [1.0503]	95	WH20HUBS-FEN
Taper Lock®	2517	Steel C45 [1.0503]	115	WH25HUBS-FEN
Taper Lock®	3020	Steel C45 [1.0503]	145	WH30HUBS-FEN
Taper Lock®	3525	Steel C45 [1.0503]	190	WH35HUBS-FEN
Taper Lock®	4030	Steel C45 [1.0503]	200	WH40HUBS-FEN
Taper Lock®	4535	Steel C45 [1.0503]	210	WH45HUBS-FEN

Disclaimer: The content of this document has been composed with the utmost care. However, it is possible that certain information changes over time, becomes inaccurate or incomplete. ERIKS does not guarantee that the information provided on this document is up to date, accurate and complete; the information provided is not intended to be advice. ERIKS shall never be liable for damage resulting from the use of the information provided.