

## GARLOCK Milk Coupling ring Bio-Eco® With lip PTFE MODIFIED GYLON 3504

This product/item [SKU] only contains the seal, and does not include the other items displayed on the image.



### Characteristics

**Series:** Bio-Eco®

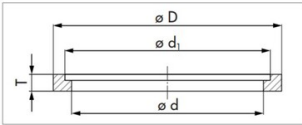
**Colour:** Blue

**Compound:** GYLON 3504

**Temperature range:** -260 / 250 °C

### Application

- Recommended in: Pharma



Standard couplingring	Dimension couplingring	Inner diameter mm	Outer diameter mm	Height mm	Article
DIN 11851	DN10	10.5	20	3.8	12527888
DIN 11851	DN15	16.5	26	3.8	12527889
DIN 11851	DN20	20.5	33	3.8	12527890
DIN 11851	DN25	26.5	40	4.8	12527891
DIN 11851	DN32	32.5	46	4.8	12527892
DIN 11851	DN40	38.5	52	4.8	12527893
DIN 11851	DN65	66.5	81	4.8	12527894
DIN 11851	DN80	81.5	95	4.8	12527895
DIN 11851	DN100	100.5	114	6.4	12527896
DIN 11851	DN150	150	167	6.4	12527897

Disclaimer: The content of this document has been composed with the utmost care. However, it is possible that certain information changes over time, becomes inaccurate or incomplete. ERIKS does not guarantee that the information provided on this document is up to date, accurate and complete; the information provided is not intended to be advice. ERIKS shall never be liable for damage resulting from the use of the information provided.