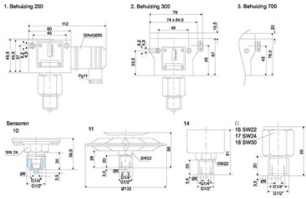


FEMA Pressure switch DCM/DNM



Characteristics

- Series:** DCM
- Type:** 3772
- Model:** Pressure switch
- Size process connection:** 1/4" [8] and 1/2" [15]
- Housing material:** Cast aluminium GD-ALSi12
- Contact type:** Micro switch
- Switching function:** Change-over
- Electrical connection:** Plug EN 175301-803 type A
- Level of protection (IP value):** IP54



Application

- Recommended in: Utilities

Adjustment range	Adjustment range pressure unit	Adjustable differential gap	Switching differential	Max. pressure bar	Process connection	Sensor/feeler type	Sensor material	Process connection material	Switching power	Article
0.2 / 1.6	bar	No	0.04 bar	6	Internal and external thread (BSPP)	Bellows	Copper	Brass	250V AC/8 A res - 250V DC/0.3 A - 24V DC/8 A	10059959
0.04 / 0.25	bar	No	0.03 bar	6	Internal and external thread (BSPP)	Bellows	Copper	Brass	250V AC/8 A res - 250V DC/0.3 A - 24V DC/8 A	10059958
0.1 / 0.6	bar	No	0.04 bar	6	Internal and external thread (BSPP)	Bellows	Copper	Brass	250V AC/8 A res - 250V DC/0.3 A - 24V DC/8 A	10059976
0.2 / 2.5	bar	No	0.1 bar	16	Internal and external thread (BSPP)	Bellows	Stainless steel 316Ti	Stainless steel 430	250V AC/8 A res - 250V DC/0.3 A - 24V DC/8 A	10071103
0.5 / 6	bar	No	0.15 bar	16	Internal and external thread (BSPP)	Bellows	Stainless steel 316Ti	Stainless steel 430	250V AC/8 A res - 250V DC/0.3 A - 24V DC/8 A	10059965
8 / 40	bar	No	1.3 bar	60	Internal and external thread (BSPP)	Bellows	Stainless steel 316Ti	Stainless steel 430	250V AC/8 A res - 250V DC/0.3 A - 24V DC/8 A	10059964
1 / 10	bar	No	0.3 bar	25	Internal and external thread (BSPP)	Bellows	Stainless steel 316Ti	Stainless steel 430	250V AC/8 A res - 250V DC/0.3 A - 24V DC/8 A	10059960
3 / 16	bar	No	0.5 bar	25	Internal and external thread (BSPP)	Bellows	Stainless steel 316Ti	Stainless steel 430	250V AC/8 A res - 250V DC/0.3 A - 24V DC/8 A	10059962
16 / 63	bar	No	2.0 bar	130	Internal and external thread (BSPP)	Bellows	Stainless steel 316Ti	Stainless steel 430	250V AC/8 A res - 250V DC/0.3 A - 24V DC/8 A	11057953
4 / 25	bar	No	1.0 bar	60	Internal and external thread (BSPP)	Bellows	Stainless steel 316Ti	Stainless steel 430	250V AC/8 A res - 250V DC/0.3 A - 24V DC/8 A	11015602
0.5 / 6	bar	No	0.25 bar	25	Internal and external thread (BSPP)	Bellows	Stainless steel 316Ti	Stainless steel 430	250V AC/8 A res - 250V DC/0.3 A - 24V DC/8 A	12184165

Disclaimer: The content of this document has been composed with the utmost care. However, it is possible that certain information changes over time, becomes inaccurate or incomplete. ERIKS does not guarantee that the information provided on this document is up to date, accurate and complete; the information provided is not intended to be advice. ERIKS shall never be liable for damage resulting from the use of the information provided.

Adjustment range	Adjustment range pressure unit	Adjustable differential gap	Switching differential	Max. pressure bar	Process connection	Sensor/feeler type	Sensor material	Process connection material	Switching power	Article
1 / 16	mbar	No	2 mbar	1	Internal and external thread [BSPP]	Membrane	NBR	Stainless steel 304	250V AC/8 A res - 250V DC/0.3 A - 24V DC/8 A	10059979
4 / 25	mbar	No	2 mbar	1	Internal and external thread [BSPP]	Membrane	NBR	Stainless steel 304	250V AC/8 A res - 250V DC/0.3 A - 24V DC/8 A	11016319
10 / 100	mbar	No	12 mbar	10	Internal and external thread [BSPP]	Membrane	NBR	Brass	250V AC/8 A res - 250V DC/0.3 A - 24V DC/8 A	10059961

Disclaimer: The content of this document has been composed with the utmost care. However, it is possible that certain information changes over time, becomes inaccurate or incomplete. ERIKS does not guarantee that the information provided on this document is up to date, accurate and complete; the information provided is not intended to be advice. ERIKS shall never be liable for damage resulting from the use of the information provided.