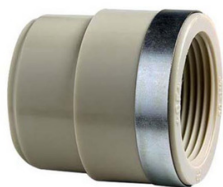


## GF Threaded sleeve in PP-H Serie: 910 PN10 Plastic welded end/Internal thread (BSPT)



### Characteristics

**Series:** 910

**Material:** PP-H

**Connection:** Plastic welded end

**Connection 2:** Internal thread (BSPT)

**Suited for electrofusion fitting:** No

**Minimum medium temperature (continuous):** 0 °C

**Maximum medium temperature (continuous):** 80 °C

Shape	External tube diameter of connection mm	Nominal inner diameter 2	Pressure rating	Article
Transition piece female	20	3/8"	PN10	10047155
Transition piece female	20	1/4"	PN10	11403355
Transition piece female	32	3/4"	PN10	10047157
Transition piece female	40	1"	PN10	10047158
Transition piece female	50	1.1/4"	PN10	10047159

Disclaimer: The content of this document has been composed with the utmost care. However, it is possible that certain information changes over time, becomes inaccurate or incomplete. ERIKS does not guarantee that the information provided on this document is up to date, accurate and complete; the information provided is not intended to be advice. ERIKS shall never be liable for damage resulting from the use of the information provided.