



OVENTROP Ball valve Type: OV10771 Brass Internal thread (BSPP) PN16

Characteristics

Type: OV10771

Norm: EN (DIN)

Construction type: 2-way

Housing construction: 2-part

Housing material: Brass

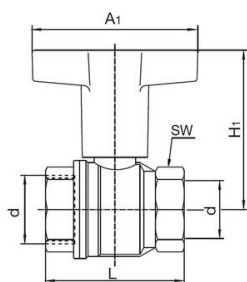
Surface protection: Nickel-plated

Connection: Internal thread (BSPP)

Maximum medium temperature (continuous): 100 °C

Application

- Recommended in: Utilities



DN	d ["]	A1 mm	H1 mm	L mm	SW mm
15	G ½	60	68	50	25
20	G ¾	80	73	54	31
25	G 1	80	77	67	38
32	G 1¼	120	114	77	48
40	G 1½	120	120	90	54
50	G 2	120	127	106	66

Temperature range

-10 tot +100°C

Nominal inner diameter	Pressure rating	Face to Face norm	Manual operation	Bore	Material ball	Seat material	Spindle material	Secondary spindle seal material	Actuator material	Article
1/2" [15]	PN16	Manufacturer standard	T-wrench	Full bore	Brass chromium-plated	PTFE	Brass	FPM (FKM)	Plastic	12711586
3/4" [20]	PN16	Manufacturer standard	T-wrench	Full bore	Brass chromium-plated	PTFE	Brass	FPM (FKM)	Plastic	12704678
1" [25]	PN16	Manufacturer standard	T-wrench	Full bore	Brass chromium-plated	PTFE	Brass	FPM (FKM)	Plastic	12711847
1.1/4" [32]	PN16	Manufacturer standard	T-wrench	Full bore	Brass chromium-plated	PTFE	Brass	FPM (FKM)	Plastic	12711848
1.1/2" [40]	PN16	Manufacturer standard	T-wrench	Full bore	Brass chromium-plated	PTFE	Brass	FPM (FKM)	Plastic	12711587
2" [50]	PN16	Manufacturer standard	T-wrench	Full bore	Brass chromium-plated	PTFE	Brass	FPM (FKM)	Plastic	12711588

Disclaimer: The content of this document has been composed with the utmost care. However, it is possible that certain information changes over time, becomes inaccurate or incomplete. ERIKS does not guarantee that the information provided on this document is up to date, accurate and complete; the information provided is not intended to be advice. ERIKS shall never be liable for damage resulting from the use of the information provided.