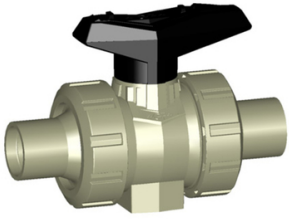


GF Ball valve Series: 546 PP-H Plastic welded end PN6/10



Characteristics

- Series:** 546
- Construction type:** 2-way
- Housing construction:** 3-part
- Housing material:** PP-H
- Connection:** Plastic welded end

Nominal inner diameter	External tube diameter of connection mm	Pressure rating	Face to Face norm	Manual operation	Material ball	Seat material	Primary spindle seal material	Secondary spindle seal material	Body seal	Article
DN80	90	PN10	Manufacturer standard	Handle	PP-H	PTFE	EPDM	EPDM	EPDM	12308882

Disclaimer: The content of this document has been composed with the utmost care. However, it is possible that certain information changes over time, becomes inaccurate or incomplete. ERIKS does not guarantee that the information provided on this document is up to date, accurate and complete; the information provided is not intended to be advice. ERIKS shall never be liable for damage resulting from the use of the information provided.