



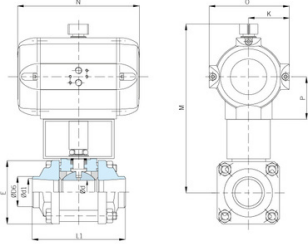
MECAFRANCE Ball valve Type: 3462 Steel Pneumatic operated Single acting, spring closing Butt weld EN ISO 1127-1 PN50 to PN100

Characteristics

Type: 3462
Norm: ASME
Construction type: 2-way
Housing construction: 3-part
Housing material: Steel
Material quality: 1.0619
Connection: Butt weld
Standard welding connection: EN ISO 1127-1
Actuator: Pneumatic operated

Characteristics [2]

Operating principle: Single acting, spring closing
Top flange standard: ISO 5211
Tertiary spindle seal material: RPTFE
Actuator material: Aluminum anodized



Nominal inner diameter	Pressure rating	Face to Face norm	Type coding actuator	Brand actuator	Bore	Material ball	Seat material	Spindle material	Primary spindle seal material	Article
3/4" [20]	PN100	Manufacturer standard	SAF10	AMG	Full bore	Stainless steel	PTFE	Stainless steel	RPTFE	11077972
1" [25]	PN100	Manufacturer standard	SAF15	AMG	Full bore	Stainless steel	PTFE	Stainless steel	RPTFE	10054747
1.1/2" [40]	PN63	Manufacturer standard	SAF20	AMG	Full bore	Stainless steel	PTFE	Stainless steel	RPTFE	10054748
2" [50]	PN50	Manufacturer standard	SAF25	AMG	Full bore	Stainless steel	PTFE	Stainless steel	RPTFE	10054749

Disclaimer: The content of this document has been composed with the utmost care. However, it is possible that certain information changes over time, becomes inaccurate or incomplete. ERIKS does not guarantee that the information provided on this document is up to date, accurate and complete; the information provided is not intended to be advice. ERIKS shall never be liable for damage resulting from the use of the information provided.