



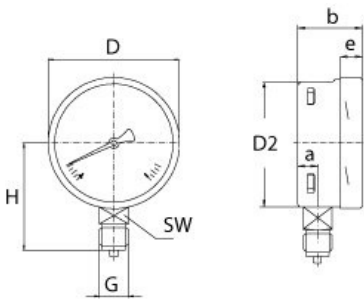
## ECON® Diaphragm drum pressure gauge Type 383 stainless steel bottom connection brass

### Characteristics

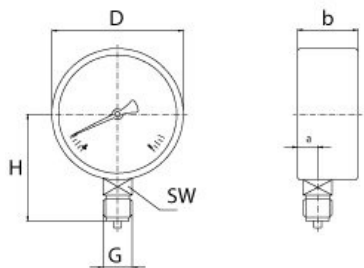
- Type:** 383
- Pressure unit secondary scale:** mmWC [mm water column]
- Accuracy class:** 1.6 %
- Pressure gauge attachment:** Direct
- Connection location:** Below
- Process connection:** External thread
- Cabinet material:** Stainless steel

### Characteristics [2]

- Process connection material:** Brass
- Material dial:** Aluminium
- Protection class:** IP54
- Medium temperature:** -20 / 60 °C
- Ambient temperature:** -20 / 60 °C



100 / 160 mm



63 mm

### Size table:

Cabinet diameter	G	a	b	D	D2	e	SW	Weight
		mm	mm	mm	mm	mm	mm	kg
R100	1/2"	15.5	49.5	101	99	17.5	22	0.5
R160	1/2"	15.5	49.5	161	159	17.5	22	0.9

Cabinet diameter	Measuring range	Pressure unit	Secondary scale division	Size process connection	Window material	Maximum overpressure	Article
mm						mbar	
100	0 / 25	mbar	0 - 250	1/2" BSPP(G)	Glass	75	11811147
100	0 / 40	mbar	0 - 400	1/2" BSPP(G)	Glass	400	11811148
100	0 / 60	mbar	0 - 600	1/2" BSPP(G)	Glass	600	11811149
100	0 / 100	mbar	0 - 1000	1/2" BSPP(G)	Glass	1000	11811150
100	0 / 160	mbar	0 - 1600	1/2" BSPP(G)	Glass	1600	11811151
100	0 / 250	mbar	0 - 2500	1/2" BSPP(G)	Glass	2500	11811153
100	0 / 400	mbar	0 - 4000	1/2" BSPP(G)	Glass	4000	11811154
160	0 / 10	mbar	0 - 100	1/2" BSPP(G)	Glass	30	12725658
160	0 / 40	mbar	0 - 40	1/2" BSPP(G)	Glass	400	12725661
160	0 / 100	mbar	0 - 1000	1/2" BSPP(G)	Glass	1000	12725659
160	0 / 250	mbar	0 - 2500	1/2" BSPP(G)	Glass	2500	12725660
160	0 / 400	mbar	0 - 4000	1/2" BSPP(G)	Glass	4000	12725662

Disclaimer: The content of this document has been composed with the utmost care. However, it is possible that certain information changes over time, becomes inaccurate or incomplete. ERIKS does not guarantee that the information provided on this document is up to date, accurate and complete; the information provided is not intended to be advice. ERIKS shall never be liable for damage resulting from the use of the information provided.