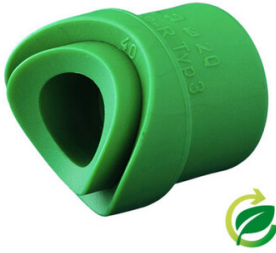


AQUATHERM Weld-in saddle PP-R Plastic welded sleeve



Characteristics

Shape: Weld-in Saddle

Material: PP-R

Connection: Plastic welded sleeve

Suited for electrofusion fitting: No

Colour: Green

Minimum medium temperature (continuous): -20 °C

Maximum medium temperature (continuous): 90 °C

With cutter: No

Undrilled: No

External tube diameter of connection	External tube diameter of connection 2	Number of scales	Article
mm	mm		
20	40	1	11086120
20	50	1	11086088
20	63	1	11086091
20	75	1	11086134
20	90	1	11086137
20	110	1	11086143
20	125	1	11204681
20	160	1	11306923
20	200/250	1	11411886
25	40	1	11086106
25	50	1	11086090
25	63	1	11086092
25	90	1	11086140
25	110	1	11086144
25	125	1	11204682
25	160	1	11306924
25	200/250	1	11411887
32	63	1	11086133
32	75	1	11086136
32	90	1	11086141
32	110	1	11086145
32	125	1	11204703
32	160	1	11306925
32	200/250	1	11411888
40	75	1	11385791
40	90	1	11086142
40	110	1	11086146
40	125	1	11204704
40	160	1	11306926
40	200	1	11411889
40	250	1	12653439
50	110	1	11385792
50	125	1	11385793
50	160	1	11385795
50	200	1	11411890
50	250	1	12592769
63	125	1	11385794
63	160	1	11385796

Disclaimer: The content of this document has been composed with the utmost care. However, it is possible that certain information changes over time, becomes inaccurate or incomplete. ERIKS does not guarantee that the information provided on this document is up to date, accurate and complete; the information provided is not intended to be advice. ERIKS shall never be liable for damage resulting from the use of the information provided.

External tube diameter of connection	External tube diameter of connection 2	Number of scales	Article
mm	mm		
63	200	1	11411891
63	250	1	11411894
63	315	1	11623304
75	160	1	11529159
75	200	1	11529161
75	250	1	11529165
75	315	1	11623305
90	160	1	11529160
90	200	1	11529162
90	250	1	11529166
90	315	1	11623306
90	355	1	11951793
110	200	1	11529163
110	250	1	11529167
110	315	1	11623261
110	355	1	11951794
125	200	1	11529164
125	250	1	11529168
125	315	1	11623262
125	355	1	11951795
160	315	1	11623303
160	355	1	11951796
200	355	1	11951797
400/500	75	1	12954787
400/500	90	1	12954791
400/500	110	1	12954788
400/500	125	1	12954789
450/500	125	1	12954804
450/630	63	1	12954792
500/560	110	1	12954793
560/630	75	1	12954794
560/630	90	1	12954795
560/630	125	1	12954796
630	110	1	12954797

Disclaimer: The content of this document has been composed with the utmost care. However, it is possible that certain information changes over time, becomes inaccurate or incomplete. ERIKS does not guarantee that the information provided on this document is up to date, accurate and complete; the information provided is not intended to be advice. ERIKS shall never be liable for damage resulting from the use of the information provided.