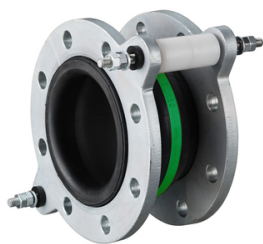
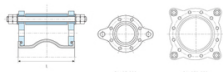


WILLBRANDT Compensator type 50 colour green - flanges - steel - model "C" with movement limiters



Characteristics

Type: 50



Colour code	Face to Face length mm	Type	Maximum operating pressure at 20 °C bar	Vacuum-resistance at 20 °C %	Configuration with movement limiter	Bellows inside wall material	Nominal inner diameter	Article
Green	130	50	16	20	Yes	CSM (Hypalon)	DN32	10040301
Green	130	50	16	20	Yes	CSM (Hypalon)	DN40	10040302
Green	130	50	16	20	Yes	CSM (Hypalon)	DN50	10040303
Green	130	50	16	20	Yes	CSM (Hypalon)	DN65	10040304
Green	130	50	16	20	Yes	CSM (Hypalon)	DN80	10040305
Green	130	50	16	20	Yes	CSM (Hypalon)	DN100	10040306
Green	130	50	16	20	Yes	CSM (Hypalon)	DN125	10040307
Green	130	50	16	20	Yes	CSM (Hypalon)	DN200	10040309
Green	130	50	16	20	Yes	CSM (Hypalon)	DN250	10040310
Green	130	50	16	20	Yes	CSM (Hypalon)	DN20	11256486
Green	130	50	16	20	Yes	CSM (Hypalon)	DN25	11256487
Green	130	50	16	20	Yes	CSM (Hypalon)	DN150	10040308
Green	130	50	16	20	Yes	CSM (Hypalon)	DN250	12427549
Green	130	50	16	20	Yes	CSM (Hypalon)	DN300	12427550
Green	130	50	16	20	Yes	CSM (Hypalon)	DN300	10040300
Green	200	50	16	20	Yes	CSM (Hypalon)	DN350	11256488
Green	200	50	16	20	Yes	CSM (Hypalon)	DN500	10040312
Green	200	50	16	20	Yes	CSM (Hypalon)	DN600	11256489
Green	200	50	16	20	Yes	CSM (Hypalon)	DN400	10040311
Green	250	50	10	20	Yes	CSM (Hypalon)	DN700	11256490
Green	250	50	10	20	Yes	CSM (Hypalon)	DN800	11256491
Green	300	50	10	20	Yes	CSM (Hypalon)	DN900	11256492
Green	300	50	10	20	Yes	CSM (Hypalon)	DN1000	11256493

Disclaimer: The content of this document has been composed with the utmost care. However, it is possible that certain information changes over time, becomes inaccurate or incomplete. ERIKS does not guarantee that the information provided on this document is up to date, accurate and complete; the information provided is not intended to be advice. ERIKS shall never be liable for damage resulting from the use of the information provided.