

DANFOSS CETOP plunger 6C

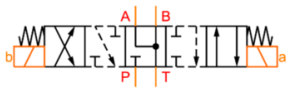
Characteristics

Version: Flangeable

Size: NG6/Cetop 3

Type of valve: 4/3

Operation: Electrical



Model	Max. operating pressure bar	Max. oilflow l/min	Voltage	Max. pressure on T bar	Electrical connection	Number of magnets per valve	Options	Article
Conventional	350	80	12 VDC	210	DIN-Connector	2		1033795
Conventional	350	80	24 VDC	210	DIN-Connector	2		1033796
Conventional	350	80	24 VDC	210	DIN-Connector	2	Low leakage	1040335
Conventional	350	80	24 VDC	210	DIN-Connector	2	Soft shift 0,8 mm	24107436
Conventional	350	80	110 VAC 50HZ	210	DIN-Connector	2		1033798
Conventional	350	80	196 VDC	210	DIN-Connector	2		1040332
Conventional	350	80	230 VAC 50HZ	210	DIN-Connector	2		1040326
Conventional	315	120	12 VDC	160	DIN-Connector	2		1033891
Conventional	315	120	24 VDC	160	DIN-Connector	2		1033885
Conventional	315	120	24 VDC	160	DIN-Connector	2	Soft shift possibility	1033888
Conventional	315	120	110 VAC 50HZ	120	DIN-Connector	2		1033893
Conventional	315	120	230 VAC 50HZ	120	DIN-Connector	2		1033896

Disclaimer: The content of this document has been composed with the utmost care. However, it is possible that certain information changes over time, becomes inaccurate or incomplete. ERIKS does not guarantee that the information provided on this document is up to date, accurate and complete; the information provided is not intended to be advice. ERIKS shall never be liable for damage resulting from the use of the information provided.