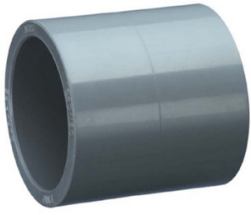


DURAPIPE Sleeve in ABS Serie: 11.100



Characteristics

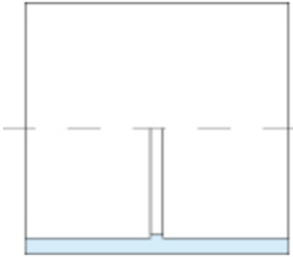
Series: 11.100

Material: ABS

Connection: Glued sleeve

Minimum medium temperature (continuous): -40 °C

Maximum medium temperature (continuous): 60 °C



Shape	External tube diameter of connection mm	Pressure rating	Article
Sleeve	16	PN10	10045743
Sleeve	20	PN10	10045744
Sleeve	25	PN10	10045745
Sleeve	32	PN10	10045746
Sleeve	40	PN10	10045747
Sleeve	50	PN10	10045748
Sleeve	63	PN10	10045749
Sleeve	75	PN10	10045750
Sleeve	90	PN10	10045751
Sleeve	110	PN10	10045752
Sleeve	125	PN10	10045753
Sleeve	140	PN10	10045754
Sleeve	160	PN10	10045755
Sleeve	200	PN10	10045756
Sleeve	225	PN10	10045757
Sleeve	250	PN10	10045758
Sleeve	315	PN10	10045759

Disclaimer: The content of this document has been composed with the utmost care. However, it is possible that certain information changes over time, becomes inaccurate or incomplete. ERIKS does not guarantee that the information provided on this document is up to date, accurate and complete; the information provided is not intended to be advice. ERIKS shall never be liable for damage resulting from the use of the information provided.