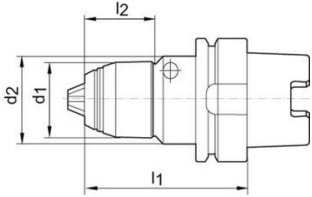


ALBRECHT Short CNC drill chuck, AKL, for clockwise and anti-clockwise rotation type 3489



DIN 69893 Form A

Design: DIN 69893, form A. Short design, guide elements of rigid design, hardened and ground wear parts ensure high concentricity and long life. 100 % concentricity test with different plug gauge diameters at various measuring points, based on DIN ISO 10888. Compact design and high rigidity result in best machining results. High clamping forces are reached by the integrated worm gear at low effort, Holding torque > 75 Nm at 13 mm dia. Machining is safe thanks to automatic blocking of the worm gear even when in left-handed rotation and quickly decelerated spindle.



Taper angle: Tolerance AT3.
 Taper surface roughness: Ra < 0.001 mm.
 Concentricity: < 0.03 mm.
 Max. permissible speed: 7000 min-1.
 Balancing quality: pre-balanced up to 7000 min-1 at a residual imbalance of max. 40 gmm.

Application: For drilling, countersinking, reaming, thread cutting and for simple finishing milling work. Can be used in machining centres, turning, drilling and milling machines.

Supplied: Short drill chuck with hex spanner.

Note: Higher speeds possible with special balancing. Also available as ULTRA design [concentricity

Description	Article
Short drill chuck AKL DIN69893 0.5-10mm HSK63	12595635
Short drill chuck AKL DIN69893 1-16mm HSK100	12595637
Short drill chuck AKL DIN69893 1-16mm HSK63	12595636

Disclaimer: The content of this document has been composed with the utmost care. However, it is possible that certain information changes over time, becomes inaccurate or incomplete. ERIKS does not guarantee that the information provided on this document is up to date, accurate and complete; the information provided is not intended to be advice. ERIKS shall never be liable for damage resulting from the use of the information provided.