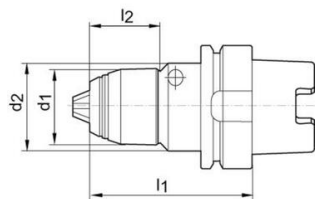


ALBRECHT Short CNC drill chuck, AKL, for clockwise and anti-clockwise rotation type 3489

DIN
69893Form
A

Design: DIN 69893, form A. Short design, guide elements of rigid design, hardened and ground wear parts ensure high concentricity and long life. 100 % concentricity test with different plug gauge diameters at various measuring points, based on DIN ISO 10888. Compact design and high rigidity result in best machining results. High clamping forces are reached by the integrated worm gear at low effort, Holding torque > 75 Nm at 13 mm dia. Machining is safe thanks to automatic blocking of the worm gear even when in left-handed rotation and quickly decelerated spindle.



Taper angle: Tolerance AT3.

Taper surface roughness: Ra < 0.001 mm.

Concentricity: < 0.03 mm.

Max. permissible speed: 7000 min-1.

Balancing quality: pre-balanced up to 7000 min-1 at a residual imbalance of max. 40 gmm.

Application: For drilling, countersinking, reaming, thread cutting and for simple finishing milling work. Can be used in machining centres, turning, drilling and milling machines.

Supplied: Short drill chuck with hex spanner.

Note: Higher speeds possible with special balancing. Also available as ULTRA design [concentricity

Description	Article
Short drill chuck AKL DIN69893 0.5-10mm HSK63	W90A-34890001
Short drill chuck AKL DIN69893 1-16mm HSK100	W90A-34890009
Short drill chuck AKL DIN69893 1-16mm HSK63	W90A-34890007