

STAUFF Clamp body LN polyamide profiled Light series



Characteristics

Series: Light

Type: LN

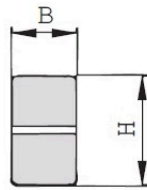
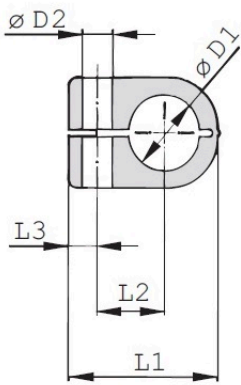
Colour: Black

Profile: Profiled

Tension clearance: Yes

Size table:

Group	B mm	H mm	L1 mm	L2 mm	L3 mm
1	14.5	13.5	22	9	7
2	14.5	18.5	27	11	7
3	14.5	23.5	33	15	7
4	14.5	30.5	40	19	7



Suitable for pipe diameter mm	Group	Material	Article
6	1	Polyamide	918601
6.4	1	Polyamide	11357436
8	1	Polyamide	909866
8	2	Polyamide	1026943
9.5	2	Polyamide	11357437
10	2	Polyamide	853925
10	3	Polyamide	756830
10.2	2	Polyamide	11357438
12	2	Polyamide	1011324
12	3	Polyamide	1033274
12.7	2	Polyamide	11357439
12.7	3	Polyamide	11357441
13.5	3	Polyamide	754838
14	3	Polyamide	11357442
14	4	Polyamide	11357444
15	3	Polyamide	11357443
15	4	Polyamide	11357445
16	3	Polyamide	806927
16	4	Polyamide	11357446
17.2	4	Polyamide	1018797
18	4	Polyamide	979929
19	4	Polyamide	11357447
20	4	Polyamide	806951

Disclaimer: The content of this document has been composed with the utmost care. However, it is possible that certain information changes over time, becomes inaccurate or incomplete. ERIKS does not guarantee that the information provided on this document is up to date, accurate and complete; the information provided is not intended to be advice. ERIKS shall never be liable for damage resulting from the use of the information provided.

Suitable for pipe diameter mm	Group	Material	Article
21.3	4	Polyamide	11357448
22	4	Polyamide	11346954

Disclaimer: The content of this document has been composed with the utmost care. However, it is possible that certain information changes over time, becomes inaccurate or incomplete. ERIKS does not guarantee that the information provided on this document is up to date, accurate and complete; the information provided is not intended to be advice. ERIKS shall never be liable for damage resulting from the use of the information provided.