

DANFOSS CETOP Directional plunger 33C

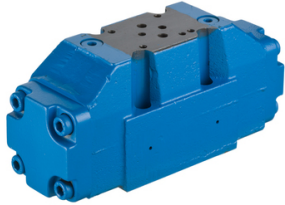
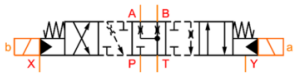
Characteristics

Version: Flangeable

Size: NG25/Cetop 8 pilot operated

Type of valve: 4/3

Operation: Electrical



Model	Max. operating pressure bar	Max. oilflow l/min	Electrical connection	Article
Conventional	315	160	DIN-Connector	12468358
Conventional	350	300		1037658
Conventional	350	700		12468362

Disclaimer: The content of this document has been composed with the utmost care. However, it is possible that certain information changes over time, becomes inaccurate or incomplete. ERIKS does not guarantee that the information provided on this document is up to date, accurate and complete; the information provided is not intended to be advice. ERIKS shall never be liable for damage resulting from the use of the information provided.