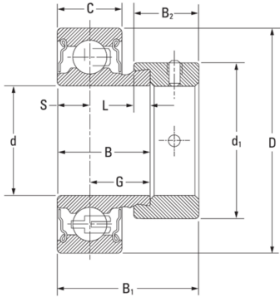




TIMKEN Wide inner ring insert bearing Cylindrical Outer Ring Eccentric Locking Collar Series: RA..DD

- Wide inner-ring ball bearing. Standard series RA/DD
Non-Relubricatable types These bearings are an extended inner-ring type with a selflocking collar.
- The two non-contact grease shields retain lubricant, provide protection against harmful contaminants and offer improved high-speed, low-torque performance.
- RA-DD series are factory-prelubricated and have cylindrical outside diameters.



Characteristics

Series: RA..DD

Model: Cylindrical Outer Ring

Shaft Locking Type: Eccentric Locking Collar

With sealing: Yes

Manufacturer ID	Shaft diameter	Outer diameter	Width	Outer ring width	Article
	in	mm	mm	mm	
RA014DD + COL	7/8	52	21.44	15.01	24021342
RA100DD + COL	1	52	21.44	15.01	24021345
RA108DD + COL	1.1/2	80	30.18	22	13163304
RA107DD + COL	1.7/16	72	25.4	19	13163306

Disclaimer: The content of this document has been composed with the utmost care. However, it is possible that certain information changes over time, becomes inaccurate or incomplete. ERIKS does not guarantee that the information provided on this document is up to date, accurate and complete; the information provided is not intended to be advice. ERIKS shall never be liable for damage resulting from the use of the information provided.