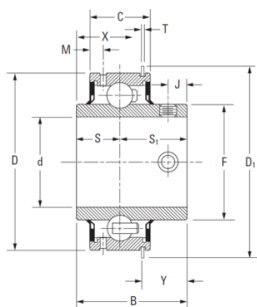




TIMKEN Wide inner ring insert bearing Cylindrical Outer Ring Setscrew Locking Series: ER

- Wide inner-ring ball bearing. Industrial series ER Relubricatable types Incorporates (optional) Shaft Guarding Technology, which reduces replacement time, provides shaft protection and prolongs shaft life.
- This bearing is designed for use in applications where low-starting torque and low-running torque are necessary.
- The ER-DD series is for applications where extremely low torque is required.
- Test results indicate an average of 95 percent reduction in start-up torque when using ER-DD instead of the standard ER bearing. Running torque is reduced up to 85 – 90 percent.



Characteristics

Series: ER

Model: Cylindrical Outer Ring

Shaft Locking Type: Setscrew Locking

With sealing: Yes

Manufacturer ID	Shaft diameter		Outer diameter		Width mm	Outer ring width		Article
	in	mm	mm	mm				
ER20	1/2	47	30.963	15.817	24207522			
ER8	1/2	47	30.963	15.817	24021176			
ER15	3/4	47	30.963	15.817	24211369			
ER12	3/4	47	30.963	15.817	12086080			
ER12 SGT	3/4	47	30.963	15.817	13163200			
ER12DD	3/4	52	34.841	18.992	13163199			
ER20DD	7/8	52	34.841	18.992	13163196			
ER22	15/16	52	34.841	18.992	24021165			
ER23	1	52	34.841	18.992	24212134			
ER16	1	52	34.841	18.992	24021161			
ER18	1.1/8	62	39.116	22.167	24021162			
ER23 SGT	1.3/16	62	39.116	22.167	13163195			
ER16 SGT	1.1/4	72	45.415	23.754	13163198			
ER23-2	1.1/4	72	45.415	23.754	13163194			
ER24	1.3/8	72	45.415	23.754	24021167			
ER27	1.1/2	80	49.225	27.722	24021168			
ER16DD	1.1/2	80	49.225	27.722	13163197			
ER32DD	1.3/4	85	51.587	28.517	13163192			
ER10	1.7/16	72	45.415	23.754	24021157			
ER14	1.7/16	72	45.415	23.754	24021159			
ER28	1.11/16	85	50.368	27.724	24021169			
ER31	1.15/16	90	51.587	28.517	24211255			
ER19	2.3/16	100	55.56	30.16	24021163			
ER32	2.3/16	100	55.56	30.16	24021171			
ER35	2.3/16	100	55.56	30.16	24021172			
ER47	2.15/16	130	77.79	38.1	24021174			
ER55	3.7/16	150	85.72	49.21	24021175			
ER8DD					14201211			
ER32DD SGT					14201210			
ER22DD					14201208			
ER51					13163191			
ER24DD					13163193			

Disclaimer: The content of this document has been composed with the utmost care. However, it is possible that certain information changes over time, becomes inaccurate or incomplete. ERIKS does not guarantee that the information provided on this document is up to date, accurate and complete; the information provided is not intended to be advice. ERIKS shall never be liable for damage resulting from the use of the information provided.

Manufacturer ID	Shaft diameter in	Outer diameter mm	Width mm	Outer ring width mm	Article
ER39	2.7/16	110	65.09	31.75	24021173

Disclaimer: The content of this document has been composed with the utmost care. However, it is possible that certain information changes over time, becomes inaccurate or incomplete. ERIKS does not guarantee that the information provided on this document is up to date, accurate and complete; the information provided is not intended to be advice. ERIKS shall never be liable for damage resulting from the use of the information provided.