

FESTO Valves VUVG, for individual connection

Valves VUVG, for individual connection

Characteristics

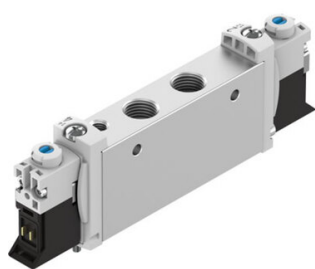
Series: VUVG

Operation: Electrical

Operating temperature: -5 / 60 °C

Housing material: Aluminium alloy

Fluid: Compressed air in accordance with
ISO8573-1:2010 [7:4:4]



Flow rate at 6 Bar l/min	Port thread type	Port Size in	Port Size mm	Operating pressure bar	Function	Pilot supply	Construction size	Operating voltage	Electrical connection	Article
1				-0.9 / 10	5/2 Bistable	External	7.3			VUVG-B18-B52-ZT-F-1R8L
1				-0.9 / 10	5/2 monostable	External	6.9			VUVG-B18-M52-MZT-F-1R8L
1				-0.9 / 8	5/2 monostable	External	6.9			VUVG-B18-M52-RZT-F-1R8L
1.15				-0.9 / 8	5/2 monostable	External				8004880-FESTO
1.15				-0.9 / 10	5/2 monostable	External				8004879-FESTO
1.3	BSPP (G)	1/4		2.5 / 8	5/2 monostable	Internal	6.9			VUVG-L18-M52-RT-G14-1R8L
90	Metric		M 3	3 / 8	5/3 closed	External	2			VUVG-L10A-P53C-ZT-M3-1P3
90	Metric		M 3	3 / 8	5/3 exhausted	Internal	2			VUVG-L10A-P53E-T-M3-1P3
100				-0.9 / 10	5/2 monostable	External	2			VUVG-B10A-M52-RZT-F-1P3
100	Metric		M 3	1.5 / 8	5/2 Bistable	Internal	2			VUVG-L10A-B52-T-M3-1P3
130				-0.9 / 10	3/2 closed, monostable	External				8028231-FESTO
135	Metric		M 5	2.5 / 8	2x3/2 closed, monostable	Internal	1.9			VUVG-L10-T32C-MT-M5-1R8L
140				-0.9 / 10	2x3/2 closed, monostable	External	1.8			VUVG-B10-T32C-MZT-F-1R8L
150	Metric		M 5	1.5 / 8	2x3/2 closed, monostable	Internal	2.7			VUVG-L10-T32C-AT-M5-1P3
150	Metric		M 5	1.5 / 8	2x3/2 open, monostable	Internal	2.7			VUVG-L10-T32U-AT-M5-1R8L
150	Metric		M 5	1.5 / 8	2x3/2 open/closed, monostable	Internal	2.7			VUVG-L10-T32H-AT-M5-1R8L
160				2.5 / 7	2x3/2 closed, monostable	Internal				8042554-FESTO
160				1.5 / 7	2x3/2 closed, monostable	Internal				8042558-FESTO
160				1.5 / 7	5/2 Bistable	Internal				VUVG-BK10-B52-T-F-1R8L-S
160				2.5 / 7	5/2 monostable	Internal				8042555-FESTO
160				2.5 / 7	5/2 monostable	Internal				8042559-FESTO

Disclaimer: The content of this document has been composed with the utmost care. However, it is possible that certain information changes over time, becomes inaccurate or incomplete. ERIKS does not guarantee that the information provided on this document is up to date, accurate and complete; the information provided is not intended to be advice. ERIKS shall never be liable for damage resulting from the use of the information provided.

Flow rate at 6 Bar l/min	Port thread type	Port Size in	Port Size mm	Operating pressure bar	Function	Pilot supply	Construction size	Operating voltage	Electrical connection	Article
170				-0.9 / 10	2x3/2 closed, monostable	External	2.7			VUUG-B10-T32C-AZT-F-IR8L
170				1.5 / 10	2x3/2 open/closed, monostable	External	2.7			VUUG-B10-T32H-AZT-F-IP3
170	Metric		M 7	1.5 / 10	2x3/2 open/closed, monostable	External	2.7			VUUG-L10-T32H-AZT-M7-IP3
180				1.5 / 7	2x3/2 closed, monostable	Internal				8042542-FESTO
190	Metric		M 5	3 / 8	5/2 monostable	Internal	2.2			578162-FESTO
195				1.5 / 7	5/2 Bistable	Internal				8042540-FESTO
195				2.5 / 7	5/2 monostable	Internal				8042539-FESTO
195				2.5 / 7	5/2 monostable	Internal				8042543-FESTO
195			M 5	1.5 / 7	5/2 Bistable	Internal		24V DC	Plug, M8x1, 3-pin	8042544-FESTO
210	Metric		M 5	3 / 8	5/3 closed	External	3.2			VUUG-L10-P53C-ZT-M5-IP3
210	Metric		M 5	3 / 8	5/3 exhausted	Internal	3.2			VUUG-L10-P53E-T-M5-IR8L
210	Metric		M 5	-0.9 / 10	5/3 pressurized	External	3.2			VUUG-L10-P53U-ZT-M5-IP3
210	Metric		M 5	3 / 8	5/3 pressurized	Internal	3.2			VUUG-L10-P53U-T-M5-IR8L
220	Metric		M 5	1.5 / 8	5/2 Bistable	Internal	3.2			577317-FESTO
220	Metric		M 5	2.5 / 8	5/2 monostable	Internal	3.2			VUUG-L10-M52-RT-M5-1H2L
220	Metric		M 5	2.5 / 8	5/2 monostable	Internal	3.2			577324-FESTO
230				-0.9 / 8	5/2 monostable	External	2.3			VUUG-B10-M52-MZT-F-IR8L
280				1.5 / 7	2x3/2 closed, monostable	Internal				8042546-FESTO
280				1.5 / 7	2x3/2 closed, monostable	Internal				8042550-FESTO
300				-0.9 / 10	5/3 closed	External	4			VUUG-B10-P53C-ZT-F-IR8L
300				-0.9 / 10	5/3 closed	External	4			VUUG-B10-P53C-ZT-F-IP3
300				-0.9 / 10	5/3 exhausted	External	4			VUUG-B10-P53E-ZT-F-IP3
300				-0.9 / 10	5/3 pressurized	External	4			VUUG-B10-P53U-ZT-F-IP3
320	Metric		M 7	-0.9 / 10	5/3 closed	External	3.5			VUUG-L10-P53C-ZT-M7-IP3
320	Metric		M 7	3 / 8	5/3 closed	Internal	3.5			VUUG-L10-P53C-T-M7-IR8L
320	Metric		M 7	3 / 8	5/3 exhausted	Internal	3.5			VUUG-L10-P53E-T-M7-IR8L
330				-0.9 / 10	5/2 Bistable	External	4			VUUG-B10-B52-ZT-F-IR8L
330	Metric		M 7	2.5 / 8	5/2 monostable	Internal	4			VUUG-L10-M52-RT-M7-IR8L
330	Metric		M 7	2.5 / 8	5/2 monostable	Internal	4			577333-FESTO

Disclaimer: The content of this document has been composed with the utmost care. However, it is possible that certain information changes over time, becomes inaccurate or incomplete. ERIKS does not guarantee that the information provided on this document is up to date, accurate and complete; the information provided is not intended to be advice. ERIKS shall never be liable for damage resulting from the use of the information provided.

Flow rate at 6 Bar l/min	Port thread type	Port Size in	Port Size mm	Operating pressure bar	Function	Pilot supply	Construction size	Operating voltage	Electrical connection	Article
340				1.5 / 7	5/2 Bistable	Internal				8042548-FESTO
340				1.5 / 7	5/2 Bistable	Internal				8042552-FESTO
340				2.5 / 7	5/2 monostable	Internal				8042547-FESTO
350				1.5 / 7	2x3/2 closed, monostable	Internal				8042570-FESTO
350				1.5 / 7	2x3/2 closed, monostable	Internal				8042574-FESTO
380				1.5 / 7	5/2 Bistable	Internal				VUVG-BK14-B52-T-F-1H2L-S
380				1.5 / 7	5/2 Bistable	Internal				VUVG-BK14-B52-T-F-1R8L-S
380				2.5 / 7	5/2 monostable	Internal				8042571-FESTO
440				1.5 / 10	2x3/2 closed, monostable	External	5.7			VUVG-B18-T32C-AZT-F-1R8L
470				-0.9 / 10	2x3/2 closed, monostable	External	4.3			VUVG-B14-T32C-MZT-F-1R8L
500	BSPP (G)	1/8		3 / 8	2x3/2 open, monostable	Internal	4.3			8031505-FESTO
560	BSPP (G)	1/8		1.5 / 8	2x3/2 closed, monostable	External	4.6			566505-FESTO
560	BSPP (G)	1/8		1.5 / 8	2x3/2 closed, monostable	Internal	4.6			577321-FESTO
560	BSPP (G)	1/8		1.5 / 8	2x3/2 closed, monostable	Internal	4.6			574226-FESTO
560	BSPP (G)	1/8		3 / 8	5/3 exhausted	Internal	5.6			VUVG-L14-P53E-T-G18-IP3
560	BSPP (G)	1/8		3 / 8	5/3 pressurized	Internal	5.6			VUVG-L14-P53U-T-G18-IP3
570				1.5 / 7	2x3/2 closed, monostable	Internal				8042562-FESTO
570				1.5 / 7	2x3/2 closed, monostable	Internal				8042566-FESTO
590	BSPP (G)	1/8		1.5 / 8	2x3/2 open/closed, monostable	Internal	4.6			574228-FESTO
600				1.5 / 10	2x3/2 closed, monostable	External	4.6			VUVG-B14-T32C-AZT-F-1R8L
600				-0.9 / 10	5/3 pressurized	External	5.6			VUVG-B14-P53U-ZT-F-1R8L
600	BSPP (G)	1/8		-0.9 / 10	2x3/2 open, monostable	Internal	4.6			VUVG-L14-T32U-AT-G18-IP3
630				-0.9 / 10	5/2 monostable	External	5.6			VUVG-B14-M52-AZT-F-1R8L
660				1.5 / 7	5/2 Bistable	Internal				8042564-FESTO
660				1.5 / 7	5/2 Bistable	Internal				8042568-FESTO
660				2.5 / 7	5/2 monostable	Internal				8042563-FESTO
680				-0.9 / 10	5/2 Bistable	External	5.6			VUVG-B14-B52-ZT-F-1R8L
680				-0.9 / 10	5/2 Bistable	External	5.6			VUVG-B14-B52-ZT-F-IP3
730	BSPP (G)	1/8		2.5 / 8	5/2 monostable	Internal	5.6			576256-FESTO
730	BSPP (G)	1/8		2.5 / 8	5/2 monostable	Internal	5.6			577325-FESTO
780	BSPP (G)	1/8		-0.9 / 10	5/2 Bistable	Internal	5.6			577319-FESTO

Disclaimer: The content of this document has been composed with the utmost care. However, it is possible that certain information changes over time, becomes inaccurate or incomplete. ERIKS does not guarantee that the information provided on this document is up to date, accurate and complete; the information provided is not intended to be advice. ERIKS shall never be liable for damage resulting from the use of the information provided.

Flow rate at 6 Bar l/min	Port thread type	Port Size in	Port Size mm	Operating pressure bar	Function	Pilot supply	Construction size	Operating voltage	Electrical connection	Article
780	BSPP (G)	1/8		3 / 8	5/2 monostable	Internal	5.6			578164-FESTO
780	BSPP (G)	1/8		2.5 / 8	5/2 monostable	Internal	5.6			VUUG-L14-M52-AT-G18-IP3
800				-0.9 / 10	2x3/2 closed, monostable	External				VUUG-B18-T32C-MZT-F-ITIL
800				-0.9 / 10	2x3/2 open, monostable	External				VUUG-B18-T32U-MZT-F-ITIL
900				-0.9 / 10	2x3/2 closed, monostable	External				8004873-FESTO
950				-0.9 / 8	5/2 monostable	External				VUUG-B18-M52-MZT-F-ITIL
950				-0.9 / 10	5/3 closed	External	6.5			VUUG-B18-P53C-ZT-F-IR8L
950				-0.9 / 10	5/3 exhausted	External	6.3			VUUG-B18-P53E-ZT-F-IR8L

Disclaimer: The content of this document has been composed with the utmost care. However, it is possible that certain information changes over time, becomes inaccurate or incomplete. ERIKS does not guarantee that the information provided on this document is up to date, accurate and complete; the information provided is not intended to be advice. ERIKS shall never be liable for damage resulting from the use of the information provided.