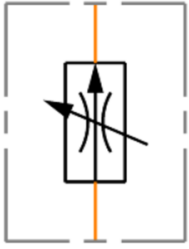


## DANFOSS 2-way pressure compensated flow control valve type FR2



### Characteristics

**Version:** Screw in cartridge valves

**Type of valve:** Without checkvalve



Cavity	Cavity mm	Model	Max. operating pressure bar	Max. oilflow l/min	Adjustment range	Article
	Conventional	350	18	0,08 - 18 L/min		1033708
C-10-2	Conventional	210	38	0 - 38 L/min		12226420

Disclaimer: The content of this document has been composed with the utmost care. However, it is possible that certain information changes over time, becomes inaccurate or incomplete. ERIKS does not guarantee that the information provided on this document is up to date, accurate and complete; the information provided is not intended to be advice. ERIKS shall never be liable for damage resulting from the use of the information provided.