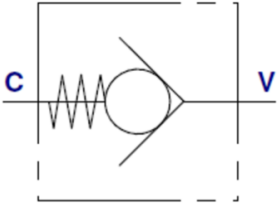


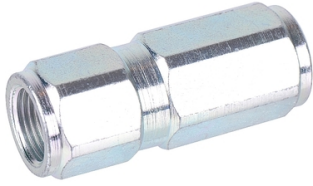
## DANFOSS Check valve RA



### Characteristics

**Version:** Inline mounting

**Material:** Steel



Opening pressure	Max. operating pressure bar	Connections	Article
0,5 bar	300	1.1/2" BSP	12305746
0,5 bar	300	1.1/4" BSP	12305745
0,5 bar	300	2" BSP	12305747
0,5 bar	500	1/2" BSP	844772
0,5 bar	500	1" BSP	844829
0,5 bar	500	3/4" BSP	844810
0,5 bar	700	1/4" BSP	844748
0,5 bar	700	1/8" BSP	1011402
0,5 bar	700	3/8" BSP	844756

Disclaimer: The content of this document has been composed with the utmost care. However, it is possible that certain information changes over time, becomes inaccurate or incomplete. ERIKS does not guarantee that the information provided on this document is up to date, accurate and complete; the information provided is not intended to be advice. ERIKS shall never be liable for damage resulting from the use of the information provided.