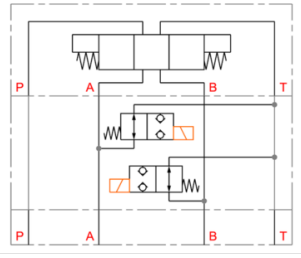


DANFOSS CETOP 2/2 valve between A-T and B-T normally open



Characteristics

Version: Sandwich

Size: NG6/Cetop 3

Type of valve: 2/2 (between A and T + B and T)

Operation: Electrical

Material: Steel

Plug type: VSI-10N-20-C



Model	Max. operating pressure bar	Max. oilflow l/min	Voltage	Electrical connection	Cartridge model	Manifold type	Height	Article
Conventional	250	60	12 VDC	DIN-Connector	SBV11 10 O 0 00	A317T	43,2	12218200
Conventional	250	60	24 VDC	DIN-Connector	SBV11 10 O 0 00	A317T	43,2	12218201

Disclaimer: The content of this document has been composed with the utmost care. However, it is possible that certain information changes over time, becomes inaccurate or incomplete. ERIKS does not guarantee that the information provided on this document is up to date, accurate and complete; the information provided is not intended to be advice. ERIKS shall never be liable for damage resulting from the use of the information provided.