

## ECON® Bourdon pressure gauge Type 3663: rear connection brass front flange



### Characteristics

- Type:** 3663
- Model:** Bourdon tube pressure gauge
- Blow-out included:** Yes
- Cabinet filling fluid:** Glycerin
- Pressure gauge attachment:** Front flange
- Process connection:** External thread
- Material mounting flange:** Stainless steel
- Process connection material:** Brass
- Window material:** Plastic
- Protection class:** IP65
- Medium temperature:** -20 / 60 °C
- Ambient temperature:** -20 / 60 °C

### Application

- Industry.
- Installation technology.
- Hydraulics.

### Technical Information

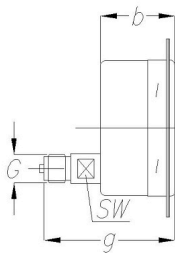
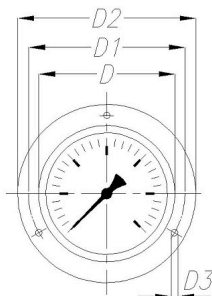
- Suitable for gases and liquids that do not affect the brass measuring system.
- Suitable for outdoor installation.
- Glycerine filling for damping of mechanical vibrations.
- Measuring ranges according to EN 837-1.
- Eccentric connection at cabinet diameter R63.
- Centric connection at cabinet diameter R100.

### Options

- Damping screw in the connection.
- Process connection NPT.
- Cabinet diameter R100.

### Size table:

Cabinet diameter	G	b	D	d2	g	SW	Weight
		mm	mm	mm	mm	mm	kg
R63	1/4"	32	68	85	57	14	0.3



Cabinet diameter	Measuring range	Pressure unit	Secondary scale division	Pressure unit secondary scale	Accuracy class	Connection location	Size process connection	Cabinet material	Material dial	Article
mm										
63	-1 / 0	bar			1.6 %	Back centric	1/4" BSPP(G)	Stainless steel 304	Aluminium	13349275
63	-1 / 1.5	bar			1.6 %	Back centric	1/4" BSPP(G)	Stainless steel 304	Aluminium	14536699

Disclaimer: The content of this document has been composed with the utmost care. However, it is possible that certain information changes over time, becomes inaccurate or incomplete. ERIKS does not guarantee that the information provided on this document is up to date, accurate and complete; the information provided is not intended to be advice. ERIKS shall never be liable for damage resulting from the use of the information provided.

## Pressure meters | Bourdon tube pressure gauge

Cabinet diameter	Measuring range	Pressure unit	Secondary scale division	Pressure unit secondary scale	Accuracy class	Connection location	Size process connection	Cabinet material	Material dial	Article
63	-1 / 3	bar			1.6 %	Back centric	1/4" BSPP(G)	Stainless steel 304	Aluminium	14528690
63	-1 / 5	bar			1.6 %	Back centric	1/4" BSPP(G)	Stainless steel 304	Aluminium	13466718
63	-1 / 9	bar			1.6 %	Back centric	1/4" BSPP(G)	Stainless steel 304	Aluminium	14543387
63	-1 / 15	bar			1.6 %	Back centric	1/4" BSPP(G)	Stainless steel 304	Aluminium	13471077
63	0 / 1	bar			1.6 %	Back centric	1/4" BSPP(G)	Stainless steel 304	Aluminium	14041198
63	0 / 1.6	bar			1.6 %	Back centric	1/4" BSPP(G)	Stainless steel 304	Aluminium	14538860
63	0 / 4	bar			1.6 %	Back centric	1/4" BSPP(G)	Stainless steel 304	Aluminium	13485807
63	0 / 6	bar			1.6 %	Back centric	1/4" BSPP(G)	Stainless steel 304	Aluminium	14077279
63	0 / 10	bar			1.6 %	Back centric	1/4" BSPP(G)	Stainless steel 304	Aluminium	12218005
63	0 / 16	bar			1.6 %	Back centric	1/4" BSPP(G)	Stainless steel 304	Aluminium	13349268
63	0 / 25	bar			1.6 %	Back centric	1/4" BSPP(G)	Stainless steel 304	Aluminium	12945195
63	0 / 40	bar			1.6 %	Back centric	1/4" BSPP(G)	Stainless steel 304	Aluminium	13349274
63	0 / 60	bar			1.6 %	Back centric	1/4" BSPP(G)	Stainless steel 304	Aluminium	12988165
63	0 / 100	bar			1.6 %	Back centric	1/4" BSPP(G)	Stainless steel 304	Aluminium	14007937
63	0 / 160	bar			1.6 %	Back centric	1/4" BSPP(G)	Stainless steel 304	Aluminium	14077281
63	0 / 160	bar	0 - 2300	psi	1.6 %	Back centric	1/4" BSPP(G)	Stainless steel 304	Aluminium	13349272
63	0 / 250	bar			1.6 %	Back centric	1/4" BSPP(G)	Stainless steel 304	Aluminium	12986860
63	0 / 400	bar			1.6 %	Back centric	1/4" BSPP(G)	Stainless steel 304	Aluminium	12722988
63	0 / 400	bar	0 - 6000	psi	1.6 %	Back centric	1/4" BSPP(G)	Stainless steel 304	Aluminium	14543386
										14539576

Disclaimer: The content of this document has been composed with the utmost care. However, it is possible that certain information changes over time, becomes inaccurate or incomplete. ERIKS does not guarantee that the information provided on this document is up to date, accurate and complete; the information provided is not intended to be advice. ERIKS shall never be liable for damage resulting from the use of the information provided.