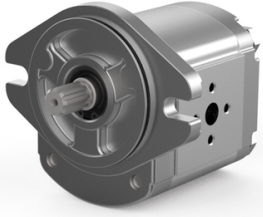


WALVOIL 2SP-A group 2, flange: SAEAOR (106.4/82.5 mm), toothed shaft 14: 9t (15.45 mm 16/32DP), N connections: flange



Characteristics

Mounting flange: SAE-A 2 bolts

Drive shaft: Spline 9 teeth 16/32 SAE-A

Execution (single/tandem): Single

Type: External Gear Pump

Position oil ports: Side

Seal material: NBR

Shaft seal type: Standard

| Displacement cm ³ /r | Direction of rotation | Max. operating pressure bar | Inlet port | Outlet port | Options | Code | Article |
|------------------------------------|--------------------------|-----------------------------------|---------------------------------|---------------------------------|-----------------------|-------------------------------|----------|
| 4 | Clockwise | 250 | European flanged ports 30/13/M6 | European flanged ports 30/13/M6 | With O-ring on flange | 2SP-A-040-D-SAEAOR-B-N-14-0-N | 13339640 |
| 4 | Counterclockwise | 250 | European flanged ports 30/13/M6 | European flanged ports 30/13/M6 | With O-ring on flange | 2SP-A-040-S-SAEAOR-B-N-14-0-N | 13339650 |
| 6 | Clockwise | 250 | European flanged ports 30/13/M6 | European flanged ports 30/13/M6 | With O-ring on flange | 2SP-A-060-D-SAEAOR-B-N-14-0-N | 13339641 |
| 6 | Counterclockwise | 250 | European flanged ports 30/13/M6 | European flanged ports 30/13/M6 | With O-ring on flange | 2SP-A-060-S-SAEAOR-B-N-14-0-N | 13339651 |
| 11 | Clockwise | 250 | European flanged ports 40/19/M8 | European flanged ports 30/13/M6 | With O-ring on flange | 2SP-A-110-D-SAEAOR-B-N-14-0-N | 13339643 |
| 11 | Counterclockwise | 250 | European flanged ports 40/19/M8 | European flanged ports 30/13/M6 | With O-ring on flange | 2SP-A-110-S-SAEAOR-B-N-14-0-N | 13339653 |
| 14 | Clockwise | 250 | European flanged ports 40/19/M8 | European flanged ports 30/13/M6 | With O-ring on flange | 2SP-A-140-D-SAEAOR-B-N-14-0-N | 13339644 |
| 14 | Counterclockwise | 250 | European flanged ports 40/19/M8 | European flanged ports 30/13/M6 | With O-ring on flange | 2SP-A-140-S-SAEAOR-B-N-14-0-N | 13339654 |
| 26 | Clockwise | 170 | European flanged ports 40/19/M8 | European flanged ports 30/13/M6 | With O-ring on flange | 2SP-A-260-D-SAEAOR-B-N-14-0-N | 13339648 |
| 26 | Counterclockwise | 170 | European flanged ports 40/19/M8 | European flanged ports 30/13/M6 | With O-ring on flange | 2SP-A-260-S-SAEAOR-B-N-14-0-N | 13339658 |
| 8,5 | Clockwise | 250 | European flanged ports 30/13/M6 | European flanged ports 30/13/M6 | With O-ring on flange | 2SP-A-080-D-SAEAOR-B-N-14-0-N | 13339642 |
| 8,5 | Counterclockwise | 250 | European flanged ports 30/13/M6 | European flanged ports 30/13/M6 | With O-ring on flange | 2SP-A-080-S-SAEAOR-B-N-14-0-N | 13339652 |
| 16,5 | Clockwise | 230 | European flanged ports 40/19/M8 | European flanged ports 30/13/M6 | With O-ring on flange | 2SP-A-160-D-SAEAOR-B-N-14-0-N | 13339645 |
| 16,5 | Counterclockwise | 230 | European flanged ports 40/19/M8 | European flanged ports 30/13/M6 | With O-ring on flange | 2SP-A-160-S-SAEAOR-B-N-14-0-N | 13339655 |
| 19,5 | Clockwise | 210 | European flanged ports 40/19/M8 | European flanged ports 30/13/M6 | With O-ring on flange | 2SP-A-190-D-SAEAOR-B-N-14-0-N | 13339646 |
| 19,5 | Counterclockwise | 210 | European flanged ports 40/19/M8 | European flanged ports 30/13/M6 | With O-ring on flange | 2SP-A-190-S-SAEAOR-B-N-14-0-N | 13339656 |
| 22,5 | Clockwise | 190 | European flanged ports 40/19/M8 | European flanged ports 30/13/M6 | With O-ring on flange | 2SP-A-220-D-SAEAOR-B-N-14-0-N | 13339647 |
| 22,5 | Counterclockwise | 190 | European flanged ports 40/19/M8 | European flanged ports 30/13/M6 | With O-ring on flange | 2SP-A-220-S-SAEAOR-B-N-14-0-N | 13339657 |
| 31,5 | Clockwise | 130 | European flanged ports 40/19/M8 | European flanged ports 30/13/M6 | With O-ring on flange | 2SP-A-310-D-SAEAOR-B-N-14-0-N | 13339649 |
| 31,5 | Counterclockwise | 130 | European flanged ports 40/19/M8 | European flanged ports 30/13/M6 | With O-ring on flange | 2SP-A-310-S-SAEAOR-B-N-14-0-N | 13339659 |

Disclaimer: The content of this document has been composed with the utmost care. However, it is possible that certain information changes over time, becomes inaccurate or incomplete. ERIKS does not guarantee that the information provided on this document is up to date, accurate and complete; the information provided is not intended to be advice. ERIKS shall never be liable for damage resulting from the use of the information provided.