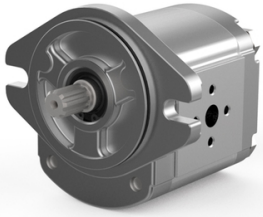


WALVOIL 2SP-A group 2, flange: SAEAOR (106.4/82.5 mm), toothed shaft 14: 9t (15.45 mm 16/32DP), N connections: flange



Characteristics

Mounting flange: SAE-A 2 bolts

Drive shaft: Spline 9 teeth 16/32 SAE-A

Execution (single/tandem): Single

Type: External Gear Pump

Position oil ports: Side

Seal material: NBR

Shaft seal type: Standard

Displacement cm ³ /r	Direction of rotation	Max. operating pressure bar	Inlet port	Outlet port	Options	Code	Article
4	Clockwise	250	European flanged ports 30/13/M6	European flanged ports 30/13/M6	With O-ring on flange	2SP-A-040-D- SAEAOR-B-N-14-0-N	13339640
4	Counterclockwise	250	European flanged ports 30/13/M6	European flanged ports 30/13/M6	With O-ring on flange	2SP-A-040-S- SAEAOR-B-N-14-0-N	13339650
6	Clockwise	250	European flanged ports 30/13/M6	European flanged ports 30/13/M6	With O-ring on flange	2SP-A-060-D- SAEAOR-B-N-14-0-N	13339641
6	Counterclockwise	250	European flanged ports 30/13/M6	European flanged ports 30/13/M6	With O-ring on flange	2SP-A-060-S- SAEAOR-B-N-14-0-N	13339651
11	Clockwise	250	European flanged ports 40/19/M8	European flanged ports 30/13/M6	With O-ring on flange	2SP-A-110-D- SAEAOR-B-N-14-0-N	13339643
11	Counterclockwise	250	European flanged ports 40/19/M8	European flanged ports 30/13/M6	With O-ring on flange	2SP-A-110-S- SAEAOR-B-N-14-0-N	13339653
14	Clockwise	250	European flanged ports 40/19/M8	European flanged ports 30/13/M6	With O-ring on flange	2SP-A-140-D- SAEAOR-B-N-14-0-N	13339644
14	Counterclockwise	250	European flanged ports 40/19/M8	European flanged ports 30/13/M6	With O-ring on flange	2SP-A-140-S- SAEAOR-B-N-14-0-N	13339654
26	Clockwise	170	European flanged ports 40/19/M8	European flanged ports 30/13/M6	With O-ring on flange	2SP-A-260-D- SAEAOR-B-N-14-0-N	13339648
26	Counterclockwise	170	European flanged ports 40/19/M8	European flanged ports 30/13/M6	With O-ring on flange	2SP-A-260-S- SAEAOR-B-N-14-0-N	13339658
8,5	Clockwise	250	European flanged ports 30/13/M6	European flanged ports 30/13/M6	With O-ring on flange	2SP-A-080-D- SAEAOR-B-N-14-0-N	13339642
8,5	Counterclockwise	250	European flanged ports 30/13/M6	European flanged ports 30/13/M6	With O-ring on flange	2SP-A-080-S- SAEAOR-B-N-14-0-N	13339652
16,5	Clockwise	230	European flanged ports 40/19/M8	European flanged ports 30/13/M6	With O-ring on flange	2SP-A-160-D- SAEAOR-B-N-14-0-N	13339645
16,5	Counterclockwise	230	European flanged ports 40/19/M8	European flanged ports 30/13/M6	With O-ring on flange	2SP-A-160-S- SAEAOR-B-N-14-0-N	13339655
19,5	Clockwise	210	European flanged ports 40/19/M8	European flanged ports 30/13/M6	With O-ring on flange	2SP-A-190-D- SAEAOR-B-N-14-0-N	13339646
19,5	Counterclockwise	210	European flanged ports 40/19/M8	European flanged ports 30/13/M6	With O-ring on flange	2SP-A-190-S- SAEAOR-B-N-14-0-N	13339656
22,5	Clockwise	190	European flanged ports 40/19/M8	European flanged ports 30/13/M6	With O-ring on flange	2SP-A-220-D- SAEAOR-B-N-14-0-N	13339647
22,5	Counterclockwise	190	European flanged ports 40/19/M8	European flanged ports 30/13/M6	With O-ring on flange	2SP-A-220-S- SAEAOR-B-N-14-0-N	13339657
31,5	Clockwise	130	European flanged ports 40/19/M8	European flanged ports 30/13/M6	With O-ring on flange	2SP-A-310-D- SAEAOR-B-N-14-0-N	13339649
31,5	Counterclockwise	130	European flanged ports 40/19/M8	European flanged ports 30/13/M6	With O-ring on flange	2SP-A-310-S- SAEAOR-B-N-14-0-N	13339659

Disclaimer: The content of this document has been composed with the utmost care. However, it is possible that certain information changes over time, becomes inaccurate or incomplete. ERIKS does not guarantee that the information provided on this document is up to date, accurate and complete; the information provided is not intended to be advice. ERIKS shall never be liable for damage resulting from the use of the information provided.