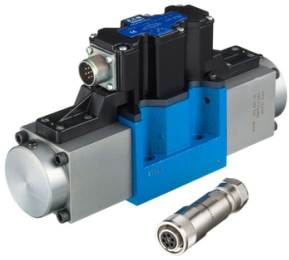


## DANFOSS Proportional control valve KBDG4V 5



### Characteristics

**Version:** Flangeable

**Size:** NG10/Cetop 5

**Type of valve:** 4/3

**Operation:** Electrical

Model	Max. operating pressure bar	Max. oilflow l/min	Voltage	Max. pressure on T bar	Electrical connection	Number of magnets per valve	Options	Article
Proportional	350	30	24 VDC	210	7-pin connector	2	On board Electronic	12468435
Proportional	350	50	24 VDC	210	7-pin connector	2	On board Electronic	12468437
Proportional	350	50	24 VDC	210	7-pin connector	2	On board Electronic	12468439
Proportional	350	50	24 VDC	210	7-pin connector	2	On board Electronic	12468440

Disclaimer: The content of this document has been composed with the utmost care. However, it is possible that certain information changes over time, becomes inaccurate or incomplete. ERIKS does not guarantee that the information provided on this document is up to date, accurate and complete; the information provided is not intended to be advice. ERIKS shall never be liable for damage resulting from the use of the information provided.