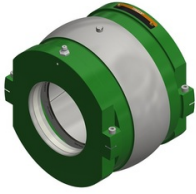


## TIMKEN Cartridge Light Series Retained Type Suitable for: ATL-seal Series: LS



Light series expansion type split plummer bearing cartridge.

### Characteristics

**Series:** LS

**Type:** HR

**Bearing type:** Retained Type

**Suitable for:** ATL-seal

Manufacturer ID	Shaft diameter in	Article
LS5HRTL	3.3/16, 3.1/4, 3.7/16, 3.1/2	LS5HRTL-TIMKEN
LS7HRTL	4.3/16, 4.1/4, 4.7/16, 4.1/2	LS7HRTL-TIMKEN
LS10HRTL	5.11/16, 5.3/4, 5.15/16, 6	LS10HRTL-TIMKEN

Disclaimer: The content of this document has been composed with the utmost care. However, it is possible that certain information changes over time, becomes inaccurate or incomplete. ERIKS does not guarantee that the information provided on this document is up to date, accurate and complete; the information provided is not intended to be advice. ERIKS shall never be liable for damage resulting from the use of the information provided.