

## IGUS Straight bushing Maintenance-free Iglidur® P/Iglidur® P Series: PSM



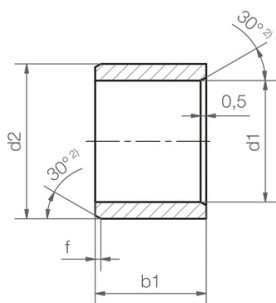
### Characteristics

**Series:** PSM

**With collar:** No

**Maintenance:** Maintenance-free

**Tread material:** Iglidur® P



Manufacturer ID	Shaft diameter mm	Outer diameter mm	Width mm	Article
PSM-0304-03	3	4.5	3	13566548
PSM-0405-04	4	5.5	4	13566549
PSM-0405-06	4	5.5	6	13566550
PSM-0507-05	5	7	5	13566551
PSM-0507-10	5	7	10	13566552
PSM-0608-06	6	8	6	13566553
PSM-0608-08	6	8	8	13566554
PSM-0608-10	6	8	10	13566555
PSM-0810-08	8	10	8	13566556
PSM-0810-10	8	10	10	13566557
PSM-0810-11	8	10	11.5	13566558
PSM-0810-12	8	10	12	13566559
PSM-1012-08	10	12	8	13566561
PSM-1012-10	10	12	10	13566562
PSM-1012-12	10	12	12	13566563
PSM-1012-15	10	12	15	13566564
PSM-1012-20	10	12	20	13566565
PSM-1214-10	12	14	10	13566566
PSM-1214-12	12	14	12	13566567
PSM-1214-15	12	14	15	13566568
PSM-1214-20	12	14	20	13566569
PSM-1214-25	12	14	25	13566570
PSM-1315-10	13	15	10	13566571
PSM-1315-20	13	15	20	13566572
PSM-1416-10	14	16	10	13566573
PSM-1416-15	14	16	15	13566574
PSM-1416-25	14	16	25	13566575
PSM-1517-15	15	17	15	13566576
PSM-1517-20	15	17	20	13566577
PSM-1517-25	15	17	25	13566578
PSM-1618-12	16	18	12	13566579
PSM-1618-15	16	18	15	13566580
PSM-1618-20	16	18	20	13566581

Disclaimer: The content of this document has been composed with the utmost care. However, it is possible that certain information changes over time, becomes inaccurate or incomplete. ERIKS does not guarantee that the information provided on this document is up to date, accurate and complete; the information provided is not intended to be advice. ERIKS shall never be liable for damage resulting from the use of the information provided.

Manufacturer ID	Shaft diameter	Outer diameter	Width	Article
	mm	mm	mm	
PSM-1618-25	16	18	25	13566582
PSM-1618-42	16	18	42	13566583
PSM-1820-15	18	20	15	13566584
PSM-1820-20	18	20	20	13566585
PSM-1820-25	18	20	25	13566586
PSM-1820-33	18	20	33	13566587
PSM-2022-22	20	22	22	13566588
PSM-2022-30	20	22	30	13566589
PSM-2022-48	20	22	48	13566590
PSM-2022-51	20	22	51	13566591
PSM-2023-10	20	23	10	13566592
PSM-2023-15	20	23	15	13566593
PSM-2023-20	20	23	20	13566594
PSM-2023-25	20	23	25	13566595
PSM-2023-30	20	23	30	13566596
PSM-2224-42	22	24	42	13566597
PSM-2224-45	22	24	45	13566598
PSM-2225-15	22	25	15	13566599
PSM-2225-20	22	25	20	13566600
PSM-2225-25	22	25	25	13566601
PSM-2225-30	22	25	30	13566602
PSM-2225-45	22	25	45	13566603
PSM-2325-37	23	25	37	13566604
PSM-2325-58	23	25	58	13566605
PSM-2325-68	23	25	68	13566606
PSM-2427-15	24	27	15	13566607
PSM-2427-20	24	27	20	13566608
PSM-2427-25	24	27	25	13566609
PSM-2427-30	24	27	30	13566610
PSM-2528-15	25	28	15	13566611
PSM-2528-20	25	28	20	13566612
PSM-2528-25	25	28	25	13566613
PSM-2528-30	25	28	30	13566614
PSM-2528-35	25	28	35	13566615
PSM-2528-50	25	28	50	13566616
PSM-2630-25	26	30	25	13566617
PSM-2832-20	28	32	20	13566618
PSM-2832-25	28	32	25	13566619
PSM-2832-30	28	32	30	13566620
PSM-3034-20	30	34	20	13566621
PSM-3034-25	30	34	25	13566622
PSM-3034-30	30	34	30	13566623
PSM-3034-40	30	34	40	13566624
PSM-3034-45	30	34	45	13566625
PSM-3236-20	32	36	20	13566626
PSM-3236-30	32	36	30	13566627
PSM-3236-40	32	36	40	13566628
PSM-3539-20	35	39	20	13566629
PSM-3539-30	35	39	30	13566630
PSM-3539-40	35	39	40	13566631
PSM-3539-50	35	39	50	13566632
PSM-3640-20	36	40	20	13566633
PSM-4044-20	40	44	20	13566634

Disclaimer: The content of this document has been composed with the utmost care. However, it is possible that certain information changes over time, becomes inaccurate or incomplete. ERIKS does not guarantee that the information provided on this document is up to date, accurate and complete; the information provided is not intended to be advice. ERIKS shall never be liable for damage resulting from the use of the information provided.

Manufacturer ID	Shaft diameter	Outer diameter	Width	Article
	mm	mm	mm	
PSM-4044-30	40	44	30	13566635
PSM-4044-40	40	44	40	13566636
PSM-4044-50	40	44	50	13566637
PSM-4044-58	40	44	58	13566638
PSM-4550-20	45	50	20	13566639
PSM-4550-30	45	50	30	13566640
PSM-4550-40	45	50	40	13566641
PSM-4550-50	45	50	50	13566642
PSM-5055-20	50	55	20	13566643
PSM-5055-30	50	55	30	13566644
PSM-5055-40	50	55	40	13566645
PSM-5055-50	50	55	50	13566646
PSM-5055-60	50	55	60	13566647
PSM-5560-50	55	60	50	13566648
PSM-6065-60	60	65	60	13566649
PSM-6570-50	65	70	50	13566651
PSM-7580-80	75	80	80	13566652
PSM-9095-100	90	95	100	13566653
PSM-95100-100	95	100	100	13566654

Disclaimer: The content of this document has been composed with the utmost care. However, it is possible that certain information changes over time, becomes inaccurate or incomplete. ERIKS does not guarantee that the information provided on this document is up to date, accurate and complete; the information provided is not intended to be advice. ERIKS shall never be liable for damage resulting from the use of the information provided.