

IGUS Flanged bushing Maintenance-free iglidur® W300/ igidur® W300 Series: WFM



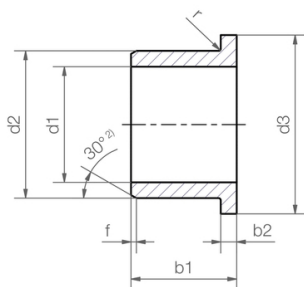
Characteristics

Series: WFM

With collar: Yes

Maintenance: Maintenance-free

Tread material: iglidur® W300



Manufacturer ID	Shaft diameter mm	Outer diameter mm	Width mm	Flange diameter mm	Flange thickness mm	Article
WFM-0204-03	2.5	4	3	6.5	0.75	13567336
WFM-0304-03	3	4.5	3	7.5	0.75	13567337
WFM-0304-05	3	4.5	5	7.5	0.75	13567338
WFM-0405-03	4	5.5	3	9.5	0.75	13567339
WFM-0405-04	4	5.5	4	9.5	0.75	13567340
WFM-0405-06	4	5.5	6	9.5	0.75	13029379
WFM-0506-08	5	6	8	10	0.5	13567341
WFM-0507-04	5	7	4	11	1	13567342
WFM-0507-05	5	7	5	11	1	24202163
WFM-0608-04	6	8	4	12	1	13567343
WFM-0608-06	6	8	6	12	1	12477926
WFM-0608-10	6	8	10	12	1	13567344
WFM-0608-15	6	8	15	12	1	13199901
WFM-0709-10	7	9	10	15	1	13567345
WFM-0709-12	7	9	12	15	1	13567346
WFM-0810-02	8	10	2.7	15	1	13567347
WFM-0810-04	8	10	4	15	1	13567348
WFM-081015-05	8	10	5	15	1	13567351
WFM-0810-05	8	10	5.5	15	1	13567349
WFM-0810-07	8	10	7	15	1	12956247
WFM-0810-09	8	10	9.5	15	1	13567350
WFM-0810-10	8	10	10	15	1	12630747
WFM-0810-23	8	10	23	15	1	13567352
WFM-0810-30	8	10	30	15	1	13567353
WFM-1012-04	10	12	4	18	1	13567355
WFM-1012-05	10	12	5	18	1	24204766
WFM-1012-06	10	12	6	18	1	24205369
WFM-1012-07	10	12	7	18	1	13567356
WFM-1012-10	10	12	10	18	1	13567357
WFM-1012-12	10	12	12	18	1	13567358
WFM-1012-15	10	12	15	18	1	13567359
WFM-1012-17	10	12	17	18	1	13567360
WFM-1214-04	12	14	4	20	1	13567362

Disclaimer: The content of this document has been composed with the utmost care. However, it is possible that certain information changes over time, becomes inaccurate or incomplete. ERIKS does not guarantee that the information provided on this document is up to date, accurate and complete; the information provided is not intended to be advice. ERIKS shall never be liable for damage resulting from the use of the information provided.

Manufacturer ID	Shaft diameter mm	Outer diameter mm	Width mm	Flange diameter mm	Flange thickness mm	Article
WFM-1214-044	12	14	4.4	20	1	13567363
WFM-1214-06	12	14	6	20	1	13567364
WFM-1214-07	12	14	7	20	1	23198318
WFM-1214-09	12	14	9	20	1	13567365
WFM-1214-10	12	14	10	20	1	13567366
WFM-1214-11	12	14	11	20	1	13567367
WFM-1214-12	12	14	12	20	1	13567368
WFM-1214-15	12	14	15	20	1	13547711
WFM-1214-17	12	14	17	20	1	13567369
WFM-1214-20	12	14	20	20	1	13567370
WFM-1315-06	13	15	6	22	1	13567371
WFM-1416-04	14	16	4	22	1	13567372
WFM-1416-05	14	16	5	22	1	13567373
WFM-1416-08	14	16	8	22	1	13567374
WFM-1416-12	14	16	12	22	1	13567375
WFM-1416-17	14	16	17	22	1	13567376
WFM-1416-29	14	16	29	22	1	13567377
WFM-1517-09	15	17	9	23	1	13567378
WFM-1517-12	15	17	12	23	1	13567379
WFM-1517-17	15	17	17	23	1	13567380
WFM-1517-20	15	17	20	23	1	13567381
WFM-1618-09	16	18	9	24	1	13386452
WFM-1618-12	16	18	12	24	1	13567383
WFM-1618-17	16	18	17	24	1	23522552
WFM-1719-12	17	19	12	25	1	24208304
WFM-1719-18	17	19	18	25	1	13567384
WFM-1719-25	17	19	25	25	1	13567385
WFM-1820-06	18	20	6	26	1	13567386
WFM-1820-12	18	20	12	26	1	13567387
WFM-1820-17	18	20	17	26	1	13567388
WFM-1820-22	18	20	22	26	1	13567389
WFM-2023-08	20	23				13567390
WFM-2023-11	20	23	11.5	30	1.5	13567391
WFM-2023-14	20	23	14.5	30	1.5	13567392
WFM-2023-16	20	23	16.5	30	1.5	13567393
WFM-2023-21	20	23	21.5	30	1.5	13567394
WFM-2427-10	24	27	10.5	32	1.5	13567395
WFM-2528-11	25	28	11.5	35	1.5	13386453
WFM-252831-13	25	28	13	31	1.5	13567399
WFM-2528-16	25	28	16.5	35	1.5	13567396
WFM-2528-21	25	28	21	35	1.5	13567397
WFM-2528-30	25	28	30	32	1.5	13567398
WFM-2830-36	28	30	36	35	1	13567400
WFM-3034-10	30	34	10	42	2	13567401
WFM-3034-16	30	34	16	42	2	11384184
WFM-3034-26	30	34	26	42	2	13567402
WFM-3034-37	30	34	37	42	2	13567403
WFM-3236-16	32	36	16	40	2	13567404
WFM-3236-26	32	36	26	40	2	13567405
WFM-3539-09	35	39	9	47	2	13567406
WFM-3539-16	35	39	16	47	2	13567407
WFM-3539-26	35	39	26	47	2	13567408
WFM-353950-35	35	39	35	50	2	13567409

Disclaimer: The content of this document has been composed with the utmost care. However, it is possible that certain information changes over time, becomes inaccurate or incomplete. ERIKS does not guarantee that the information provided on this document is up to date, accurate and complete; the information provided is not intended to be advice. ERIKS shall never be liable for damage resulting from the use of the information provided.

Manufacturer ID	Shaft diameter mm	Outer diameter mm	Width mm	Flange diameter mm	Flange thickness mm	Article
WFM-3842-22	38	42	22	50	2	13567410
WFM-4044-30	40	44	30	52	2	12975890
WFM-4044-40	40	44	40	52	2	12448433
WFM-4550-50	45	50	50	58	2	13567411
WFM-5055-40	50	55	40	63	2	13567412
WFM-5055-50	50	55	50	63	2	13567413
WFM-5560-60	55	60	60	68	2	13567414
WFM-5762-40	57	62	40	67	2	13567415
WFM-6065-60	60	65	60	73	2	13567416
WFM-6570-60	65	70	60	78	2	13567417
WFM-7075-100	70	75	100	83	2.5	13567418
WFM-7580-100	75	80	100	88	2.5	13567419
WFM-8085-100	80	85	100	93	2.5	13567420
WFM-9095-100	90	95	100	103	2.5	13567421
WFM-100105-100	100	105	100	113	2.5	13567354
WFM-120125-100	120	125	100	133	2.5	13567361

Disclaimer: The content of this document has been composed with the utmost care. However, it is possible that certain information changes over time, becomes inaccurate or incomplete. ERIKS does not guarantee that the information provided on this document is up to date, accurate and complete; the information provided is not intended to be advice. ERIKS shall never be liable for damage resulting from the use of the information provided.