



GUTH VENTILE Pneumatic actuator Series: 4500 Stainless steel (AISI 304) Single acting, spring closing

Characteristics

Series: 4500
Transmission: Quarter turn
Execution: Pneumatic actuator
Operating principle: Single acting, spring closing
Material housing: Stainless steel (AISI 304)
Material quality: 1.4301

External roughness value: Ra 1.5 - 2.5 µm electro polished

With mechanical setting indicator: Yes

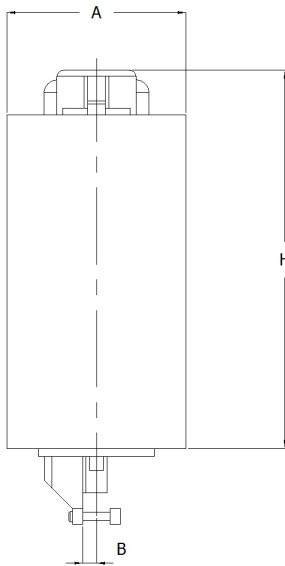
Puck: Yes

Puck for sensor: Yes

Application

- Recommended in: Food & Beverages

Size table:



Type coding actuator	Compatible with DN	A mm	B mm	H mm	Weight kg
PDA 90/100	DN25 - DN80 [1" - 3"]	104	10	210	7.12
PDA 90/100	DN100 [4"]	104	10	210	7.25
PDA 90/125	DN125 [5"]	240	16	240	7.36
PDA 90/125	DN150 [6"]	240	16	240	7.42
PDA 90/75	DN10 - DN40 [3/8" - 1.1/2"]	76	10	168	7.07

Model	Suitable for size	Signal pressure	Air supply connection	Weight kg	Article
PDA 90/100	DN25 - DN80 [1" - 3"]	5.5 - 8 bar	1/8" [6] internal thread [BSPP]	7.12	14671860
PDA 90/100	DN100 [4"]	5.5 - 8 bar	1/8" [6] internal thread [BSPP]	7.25	14671795
PDA 90/125	DN125 [5"]	5.5 - 8 bar	1/8" [6] internal thread [BSPP]	7.36	14671796
PDA 90/125	DN150 [6"]	5.5 - 8 bar	1/8" [6] internal thread [BSPP]	7.42	14671797
PDA 90/75	DN10 - DN40 [3/8" - 1.1/2"]	5.5 - 8 bar	1/8" [6] internal thread [BSPP]	7.07	14671794

Disclaimer: The content of this document has been composed with the utmost care. However, it is possible that certain information changes over time, becomes inaccurate or incomplete. ERIKS does not guarantee that the information provided on this document is up to date, accurate and complete; the information provided is not intended to be advice. ERIKS shall never be liable for damage resulting from the use of the information provided.