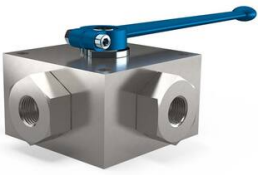


MHA ZENTGRAF 4-Way ball valve Series: 4KH Steel Cutting ring, light (L) PN315/400/500



Characteristics

Series: 4KH

Construction type: 4-way

Housing material: Steel

Surface protection: Zinc Plated

Connection: Cutting ring, light (L)

Seat material: POM

Spindle material: Steel

Minimum medium temperature (continuous): -20 °C

Maximum medium temperature (continuous): 100 °C

| Nominal inner diameter | External tube diameter of connection | Connection, gland nut | Pressure rating | Face to Face norm | Manual operation | Ball bore | Secondary spindle seal material | Body seal | Weight | Article |
|------------------------|--------------------------------------|-----------------------|-----------------|-----------------------|------------------|-----------|---------------------------------|-----------|--------|----------|
| | | | | | | | | | mm | |
| DN06 | 8 | M 14x1.5 | PN500 | Manufacturer standard | Handle | T-bore | FPM (FKM) | FPM (FKM) | 1.6 | 14613253 |
| DN06 | 8 | M 14x1.5 | PN500 | Manufacturer standard | Handle | X-bore | FPM (FKM) | FPM (FKM) | 1.6 | 14613254 |
| DN06 | 8 | M 14x1.5 | PN500 | Manufacturer standard | Handle | T-bore | NBR | NBR | 1.6 | 14613255 |
| DN06 | 8 | M 14x1.5 | PN500 | Manufacturer standard | Handle | X-bore | NBR | NBR | 1.6 | 14613256 |
| DN08 | 10 | M 16x1.5 | PN500 | Manufacturer standard | Handle | X-bore | NBR | NBR | 2.6 | 14613261 |
| DN08 | 10 | M 16x1.5 | PN500 | Manufacturer standard | Handle | T-bore | NBR | NBR | 2.6 | 14613260 |
| DN10 | 12 | M 18x1.5 | PN500 | Manufacturer standard | Handle | X-bore | FPM (FKM) | FPM (FKM) | 2.7 | 14613197 |
| DN10 | 12 | M 18x1.5 | PN500 | Manufacturer standard | Handle | X-bore | NBR | NBR | 2.7 | 14613199 |
| DN10 | 12 | M 18x1.5 | PN500 | Manufacturer standard | Handle | T-bore | NBR | NBR | 2.7 | 14613198 |
| DN13 | 15 | M 22x1.5 | PN400 | Manufacturer standard | Handle | T-bore | NBR | NBR | 4.8 | 14613212 |
| DN13 | 15 | M 22x1.5 | PN400 | Manufacturer standard | Handle | X-bore | NBR | NBR | 4.8 | 14613213 |
| DN16 | 18 | M 26x1.5 | PN400 | Manufacturer standard | Handle | X-bore | NBR | NBR | 4.8 | 14613222 |
| DN16 | 18 | M 26x1.5 | PN400 | Manufacturer standard | Handle | T-bore | NBR | NBR | 4.8 | 14613221 |
| DN20 | 22 | M 30x2 | PN315 | Manufacturer standard | Handle | X-bore | NBR | NBR | 6.7 | 14613225 |
| DN20 | 22 | M 30x2 | PN315 | Manufacturer standard | Handle | T-bore | NBR | NBR | 6.7 | 14613226 |
| DN25 | 28 | M 36x2 | PN315 | Manufacturer standard | Handle | X-bore | NBR | NBR | 8.4 | 14613241 |

Disclaimer: The content of this document has been composed with the utmost care. However, it is possible that certain information changes over time, becomes inaccurate or incomplete. ERIKS does not guarantee that the information provided on this document is up to date, accurate and complete; the information provided is not intended to be advice. ERIKS shall never be liable for damage resulting from the use of the information provided.