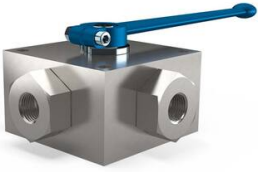


MHA ZENTGRAF 3-Way ball valve Series: 3KH Steel Internal thread (BSPP) PN315/400/500



Characteristics

Series: 3KH

Construction type: 3-way

Housing material: Steel

Surface protection: Zinc Plated

Connection: Internal thread (BSPP)

Spindle material: Steel

Minimum medium temperature (continuous): -20 °C

Maximum medium temperature (continuous): 100 °C

Nominal inner diameter	Standard thread connection	Pressure rating	Face to Face norm	Manual operation	Ball bore	Seat material	Secondary spindle seal material	Body seal	Weight kg	Article
1/8" [4]	ISO 228-1	PN500	Manufacturer standard	Handle	L-bore	POM	FPM (FKM)	FPM (FKM)	1.6	14613173
1/8" [4]	ISO 228-1	PN500	Manufacturer standard	Handle	T-bore	POM	NBR	NBR	1.6	14613175
1/8" [4]	ISO 228-1	PN500	Manufacturer standard	Handle	L-bore	POM	NBR	NBR	1.6	14613174
1/4" [6]	ISO 228-1	PN500	Manufacturer standard	Handle	L-bore	POM	FPM (FKM)	FPM (FKM)	1.6	14613186
1/4" [6]	ISO 228-1	PN500	Manufacturer standard	Handle	T-bore	POM	FPM (FKM)	FPM (FKM)	1.6	14613187
1/4" [6]	ISO 228-1	PN500	Manufacturer standard	Handle	T-bore	POM	NBR	NBR	1.6	14613189
1/4" [6]	ISO 228-1	PN500	Manufacturer standard	Handle	L-bore	POM	NBR	NBR	1.6	14613188
3/8" [10]	ISO 228-1	PN500	Manufacturer standard	Handle	T-bore	POM	FPM (FKM)	FPM (FKM)	2.7	14613117
3/8" [10]	ISO 228-1	PN500	Manufacturer standard	Handle	L-bore	POM	FPM (FKM)	FPM (FKM)	2.7	14613116
3/8" [10]	ISO 228-1	PN500	Manufacturer standard	Handle	L-bore	POM	NBR	NBR	2.7	14613118
3/8" [10]	ISO 228-1	PN500	Manufacturer standard	Handle	T-bore	POM	NBR	NBR	2.7	14613119
1/2" [13]	ISO 228-1	PN400	Manufacturer standard	Handle	T-bore	POM	FPM (FKM)	FPM (FKM)	5.1	14613129
1/2" [13]	ISO 228-1	PN400	Manufacturer standard	Handle	L-bore	POM	FPM (FKM)	FPM (FKM)	5.1	14613128
1/2" [13]	ISO 228-1	PN400	Manufacturer standard	Handle	L-bore	POM	NBR	NBR	5.1	14613130
3/4" [20]	ISO 228-1	PN315	Manufacturer standard	Handle	T-bore	POM	FPM (FKM)	FPM (FKM)	6.7	14613145
3/4" [20]	ISO 228-1	PN315	Manufacturer standard	Handle	L-bore	POM	FPM (FKM)	FPM (FKM)	6.7	14613144
3/4" [20]	ISO 228-1	PN315	Manufacturer standard	Handle	L-bore	POM	NBR	NBR	6.7	14613146
3/4" [20]	ISO 228-1	PN315	Manufacturer standard	Handle	T-bore	POM	NBR	NBR	6.7	14613147
1" [25]	ISO 228-1	PN315	Manufacturer standard	Handle	L-bore	POM	FPM (FKM)	FPM (FKM)	8.2	14613164
1" [25]	ISO 228-1	PN315	Manufacturer standard	Handle	T-bore	POM	FPM (FKM)	FPM (FKM)	8.2	14613165
1" [25]	ISO 228-1	PN315	Manufacturer standard	Handle	T-bore	POM	NBR	NBR	8.2	14613167
1" [25]	ISO 228-1	PN315	Manufacturer standard	Handle	L-bore	POM	NBR	NBR	8.2	14613166

Disclaimer: The content of this document has been composed with the utmost care. However, it is possible that certain information changes over time, becomes inaccurate or incomplete. ERIKS does not guarantee that the information provided on this document is up to date, accurate and complete; the information provided is not intended to be advice. ERIKS shall never be liable for damage resulting from the use of the information provided.